

QUANTITATIVE FINANCE  
RESEARCH CENTRE



UNIVERSITY OF  
TECHNOLOGY SYDNEY



## QUANTITATIVE FINANCE RESEARCH CENTRE

Research Paper 251

July 2009

---

### A Dynamic Analysis of the Microstructure of Moving Average Rules in a Double Auction Market

Carl Chiarella, Xue-Zhong He and Paolo Pellizzari

---

ISSN 1441-8010

[www.qfrc.uts.edu.au](http://www.qfrc.uts.edu.au)

# A DYNAMIC ANALYSIS OF THE MICROSTRUCTURE OF MOVING AVERAGE RULES IN A DOUBLE AUCTION MARKET

CARL CHIARELLA<sup>§</sup>, XUE-ZHONG HE<sup>§</sup> AND PAOLO PELLIZZARI<sup>†</sup>

<sup>§</sup> SCHOOL OF FINANCE AND ECONOMICS  
UNIVERSITY OF TECHNOLOGY, SYDNEY  
PO BOX 123, BROADWAY, NSW 2007, AUSTRALIA  
EMAILS: CARL.CHIARELLA@UTS.EDU.AU, TONY.HE-1@UTS.EDU.AU

AND

<sup>†</sup> DEPARTMENT OF APPLIED MATHEMATICS  
SCHOOL FOR ADVANCED STUDIES IN VENICE  
CA' FOSCARI UNIVERSITY  
DORSUDURO 3825/E 30123 VENICE, ITALY  
EMAIL: PAOLOP@UNIVE.IT

July 6, 2009

**ABSTRACT.** Inspired by the theoretically oriented dynamic analysis of moving average rules in Chiarella, He and Hommes (CHH) (2006a) model, this paper conducts a dynamic analysis of a microstructure model of continuous double auctions in which the probability of heterogeneous agents to trade is determined by the rules of either fundamentalists mean-reverting to the fundamental or chartists choosing moving average rules based their relative performance. With such a realistic market microstructure, the model is able not only to obtain the results of the CHH model but also to characterise most of the stylized facts including the power-law behaviour of volatility. The results seem to suggest that a comprehensive explanation of several statistical properties of returns is possible in a framework where both *behavioral* traits and *realistic microstructure* have a role.

**Key Words:** microstructure model, continuous double auctions, heterogeneous agents, stylized facts

**JEL Codes:** G12, D53.

---

This paper was written while Paolo Pellizzari was visiting the School of Finance and Economics at the University of Technology, Sydney (UTS). The financial support of the Paul Woolley Centre for Market Dysfunctionality and the Quantitative Finance Research Centre at UTS are gratefully acknowledged together with the Italian PRIN 2007 grant 2007TKLTSR, "Computational markets design and agent-based models of trading behavior". Chiarella and He acknowledge the ARC Discovery Grant DP0773776 in its support of this project.

## 1. INTRODUCTION

In traditional economic and finance theory based on the assumptions of investor homogeneity and rational expectations, agents are rationally impounding all relevant information into their trading decisions. Hence the movement of prices is assumed to be perfectly random and to exhibit random walk behaviour. The theory does provide a benchmark framework for our understanding of the dynamics of financial asset prices, but it ignores some of the most important features of real world economic agents such as their heterogeneity and bounded rationality and the impact of their interaction on the particular structure of financial markets. Also, empirical investigations of high-frequency, such as daily, financial time series in financial markets show some common stylized facts, including excess volatility, some skewness and excess kurtosis, fat tails, volatility clustering, power-law behaviour in returns, and some other types of power-law behaviour; see Pagan (1996) for a comprehensive discussion of stylized facts characterizing financial time series and Lux (2004) for a recent survey on empirical evidence of various power laws. These facts are not entirely contradictory to the traditional economic and finance theory, but standard results do not provide persuasive explanations for a large subset of these facts.

As a result the literature has witnessed an increasing number of attempts at modelling financial markets by incorporating heterogeneous agents and bounded rationality, on which there is a nice overview in the recent surveys by Lux (2004, 2009), Hommes (2006), LeBaron (2006), and Chiarella, Dieci and He (2009). This class of model characterizes the dynamics of financial asset prices as resulting from the interaction of heterogeneous agents having different attitudes to risk and different expectations about the future evolution of prices. One of the key aspects of these models is that they exhibit expectations feedback—agents' decisions are based upon predictions of future values of endogenous variables whose actual values are determined by equilibrium equations. In particular, Brock and Hommes (1997, 1998) proposed an *Adaptive Belief System* model of financial markets. The agents adapt their beliefs over time by choosing from different predictors or expectation functions, based upon their past performance. The resulting nonlinear dynamical system is, as Brock and Hommes (1998) and Hommes (2002) show, capable of generating a wide range of complex price behaviour from local stability to high order cycles and chaos. It is very interesting to find that adaptation, evolution, heterogeneity, and even learning, can be incorporated into the Brock and Hommes type of framework, for details of such extensions the reader should consult Gaunersdorfer (2000), Hommes (2001, 2002), Chiarella and He (2001, 2002, 2003), Chiarella *et al.* (2002) for asset markets and De Grauwe

and Grimaldi (2006) and Westerhoff (2003) for foreign exchange markets. Moreover, the recent articles by Westerhoff (2004) and Chiarella *et al.* (2005, 2006) show that complex price dynamics may also result within a multi-asset market framework. This broader framework of boundedly rational heterogeneous agents can also give rise to quite rich and complicated dynamics and so give a deeper understanding of market behaviour. In particular it is capable of explaining various types of market behaviour, such as the deviation of the market price from the fundamental price, market booms and crashes, and quite a number of the stylized facts referred to earlier. More recently, He and Li (2007, 2008) use a simple market fraction model of fundamentalists and trend followers to analyze the mechanism generating the power-law distributed fluctuations. Their results provide a promising perspective on the use of these models to produce the observed characteristics of financial market time series.

In contrast to the theoretically oriented models discussed above, there is also a rapidly expanding literature of heterogeneous agent models that is computationally oriented and on which we refer the reader to the recent survey by LeBaron (2006). These models are becoming increasingly important and have proved to be very powerful at generating the stylized facts, in particular, the various types of power-law behaviour. There are at least two important advantages of this approach compared to the theoretically oriented one. The first is that many behavioural aspects at the micro level including the interaction of agents can be aggregated at the macro level through computer simulations. The second is that more realistic market features, including budget or wealth constraints, no-short-selling and irregular intra-day trading of non-fractional shares, can be readily incorporated into the market microstructure of continuous double auctions, dealer and hybrid markets. It should be stated that earlier work on the computational class of models faced the problem of many degree of freedom and many parameters, which made it difficult to understand and assess the main causes of the observed stylized facts. Here we shall follow the path of adding some realistic features to a model that is well understood from a theoretical perspective but involves a minimal, in some sense, set of parameters.

The advantages of both theoretically and computationally oriented heterogeneous agent models have naturally led to some recent computationally oriented models which are based on theoretically oriented models but with more realistic market microstructure, for example, Chiarella and Iori (2002), Pellizzari and Westerhoff (2007), and Chiarella, Iori and Perellò (2009). The current paper falls into this category and conducts a dynamic analysis of a microstructure model of continuous double auctions based on the theoretically oriented work of Chiarella, He and Hommes (2006a) (CHH model hereafter) that gave a

dynamic analysis of moving average rules under the market maker scenario. The CHH model proposes a stochastic dynamic financial market model in which demand for traded assets has both a fundamentalist and a chartist component. The chartist demand is governed by the difference between current price and a long-run moving average. It shows that the moving average can be a source of market instability, and the interaction of the moving average and market noises can lead to the tendency for the market price to take long excursions away from the fundamental. The model reveals various types of market price phenomena, the coexistence of apparent market efficiency and a large chartist component, price resistance levels, and skewness and kurtosis of returns. In order to be able to conduct a theoretical analysis, CHH make some less realistic assumptions, including, a fixed length for the moving average window, unlimited short selling and borrowing, trading of fractional amounts of shares, and no intra-day trading. In particular, they assume homogeneity within the two groups of the model, fundamentalists and chartists. This paper drops these unrealistic assumptions and also allows the market price to be determined by a market microstructure model of continuous double auctions (CDA) instead of by the stylised market maker scenario used in the CHH model. Unlike in the CHH model, it is the probability of heterogeneous agents to trade, rather than their demands, that is determined by the rules of either fundamentalists mean-reverting to the fundamental or chartists choosing moving average rules based on their relative performance. We find that, with the inclusion of this realistic market microstructure, the model is not only able to obtain the essential features of the CHH model but also to characterise most of the stylized facts including the power-law behaviour of the volatility. The results seem to suggest that a comprehensive explanation of several statistical properties of returns is possible in a framework where both *behavioural* traits and *realistic microstructure* have a role.

The plan of the paper is as follows. Section 2 introduces the model. As a benchmark, Section 3 reviews the stylized facts of three European stock market indices. Section 4 contains the main results and a sensitivity analysis. Section 5 concludes.

## 2. A CONTINUOUS DOUBLE AUCTION WITH HETEROGENEOUS TRADERS

Our model is inspired by that of Chiarella, He and Hommes (2006a) (CHH), much of the structure of which is retained in term of types of agents and behavioural characteristics behind their demand functions. However we extend the CHH model considerably in order to introduce a more realistic market microstructure through a continuous double auction (CDA) that has become a widely used clearing device in many stock exchanges around the world.

It is convenient to briefly outline the salient features of the CHH model. Two types of agents, fundamentalists and chartists, populate the market and trade depending on the value of the fundamental price and on the trading signal generated by a fixed-length moving average of past prices. The fractions of agents of type  $h \in \{f, c\}$ , standing for fundamentalist and chartist, respectively, evolve according to smoothed realized profits, as pioneered in Brock and Hommes (1998). The price reacts to the imbalance in demand and supply via a market maker who clears the market and announces the price for the next period. The CHH model shows that trading based on moving averages can be destabilizing, especially if the window length is increased. The addition of noise, either in the fundamental process or market noise, has the potential to cause the model to generate bubbles, crashes, and environments where the chartist component is persistent. The price time series of the model with fundamental noise alone however does not exhibit a number of the standard statistical features found in most financial market time series, in particular the power-law behaviour of volatility. Chiarella, He and Hommes (2006*b*) further show that, with a careful selection of the sizes of the fundamental and market noises, the addition of an additive (rather than multiplicative) noise to the price equation of the market maker bring these statistical features closer to what is observed in actual financial data.

We stress the fact that the CHH model abstracts from many details related to the actual trading mechanism. Agents, for example, without considering endowments, can in principle buy or sell unlimited quantities acting as price takers. Demands are filled by a market maker or an impersonal clearing device and all the chartists use the same moving average signal for trading purposes. Whilst retaining the main ideas of CHH this paper extends their model in several directions with the main aim of introducing more realistic market microstructure and producing more realistic statistical features of the returns generated by simulation, as recently advocated by Lux (2009). First, we consider a CDA where budget-constrained agents submit limit orders with no certainty that they will be filled. Exchange takes place only if two parties agree on quantity and price and there is a layer of intra-day activity that is missing from the original model. A book-based microstructure framework also requires that agents be endowed with (simple) ways to deal with the fundamental tradeoff in a continuous market: the more aggressive the limit order, the bigger is the probability of trading but, conversely, the smaller is the final profit if the transaction is executed. Second, our agent-based market allows the chartists to use individual lengths for their moving average. This was indeed one of the ideas left for future research in the original work. Finally and possibly more ambitiously, we claim that a realistic microstructure model can perturb the original model in the “right” way, meaning that a book-based

augmented CHH model is able to produce a host of common stylized facts.

**2.1. The Heterogeneous Agents and Trading.** We assume that agent  $i$  in a population of  $N$  agents is initially endowed with some units  $S_{i0}$  of a non-dividend paying risky stock and cash  $C_{i0}$ , with  $i = 1, \dots, N$ . The endowments  $S_{it}$  and  $C_{it}$  at time  $t$  are updated in the obvious way whenever the agents trade. Agents cannot short-sell stocks or borrow money. We assume that the interest rate  $r = 0$  or, equivalently, that the interest rate payments are spent elsewhere.

As in the CHH model, agents are heterogeneous in that they can trade based on a fundamental or chartist strategy. In the first case, they seek to buy (sell) stock when it is under(over)-valued with respect to an exogenously given, stochastically fluctuating fundamental price that evolves according to

$$p_{t+1}^* = p_t^* \exp(\sigma_f v_t),$$

where  $\sigma_f \geq 0$  is the constant volatility of the fundamental return and  $v_t \sim N(0, 1)$  follows a standard normal distribution. The chartists use a moving average price (computed over time-windows of heterogeneous length) to obtain buy/sell signals.

In the following, the subscript  $t = 1, \dots, T$  will refer to calendar trading days when variables are constant over the  $t$ -th “trading day”, while  $\tau \in \mathbf{R}^+$  is a time-subscript that will be used with variables that can assume different values in the same day, such as the price of stock traded in any continuous auction.

The agents can submit one limit order per day valid for one unit of the stock<sup>1</sup>. A limit order is a quantity-limit price couple  $(q, l)$  that is submitted in a randomly selected instant  $t < \tau < t + 1$  of a given day  $t$ . At the beginning of each day a random permutation  $\mathcal{P}_t$  of  $\{1, \dots, N\}$  is drawn and agents take action in the order dictated by  $\mathcal{P}_t$ . In other words, orders are issued sequentially, in a random order that is independently sampled every day, so that agents have only one chance to trade each day when it is their turn to “speak”.

Each fundamentalist trader posts an order with some probability<sup>2</sup>  ${}_t s_\tau = \min(1, \alpha |p_t^* - p_\tau|)$ , with  $\alpha > 0$  denoting the sensitivity to the deviations of the most recent price from the fundamental value, and

<sup>1</sup>Allowing for cancellations of orders, resubmissions, multiple orders or other features would hugely complicate the model and would require a much richer modelling of the agents’ behaviour. Moreover, we do not think that single-unit orders constitute a severe limitation for an agent willing to buy/sell multiple units as he/she can keep trading for several days to reach the desired quantities. Chiarella, Iori and Perellò (2009) provide a modelling framework of CDA markets where agents do form multiple unit demand functions based on utility maximisation.

<sup>2</sup>Note that the form of the probability will be the same for each fundamentalist, but it will yield a different value for each of them as the  $p_\tau$  could possibly change at each instant, determined by the sequencing of the agents.

refrain from posting with the residual probability. The chances of submitting orders increases when this deviation is large and agents submit for sure whenever the mispricing is bigger than  $1/\alpha$ , in either direction. Formally, the order  $({}_tq_{i\tau}, {}_tl_{i\tau})$  of agent  $i$  posted with probability  ${}_ts_\tau$  is such that

$${}_tq_{i\tau} = \text{sgn}(p_t^* - p_\tau),$$

where  $\text{sgn}$  denotes the sign function so that that positive (negative) arguments lead to buy (sell) orders. We assume that the submitted limit price is uniformly drawn between the fundamental and the last available closing price  $p_{t-1}^{\text{close}}$ , thus

$${}_tl_{i\tau} = \begin{cases} U(p_{t-1}^{\text{close}}, p_t^*) & \text{if } p_{t-1}^{\text{close}} < p_t^*; \\ U(p_t^*, p_{t-1}^{\text{close}}) & \text{if } p_t^* < p_{t-1}^{\text{close}}. \end{cases}$$

The specification of the limit price is consistent with the idea that a fundamental agent would trade at any price below (above) the fundamental value, if he/she is a buyer (seller).<sup>3</sup> Hence, he/she provides (limited) liquidity at price levels that are, at the same time, more favorable than the previous closing price and secure some random profit with respect to the fundamental value, if executed. We can also interpret this bidding strategy, that has similarities with the Zero Intelligence Constrained (ZIC) traders in Gode and Sunder (1993), as the choice of a random mark-up (mark-down) with respect to the reservation price of the fundamentalists that is given by the fundamental value  $p_t^*$ .

Each chartist submits an order with probability  ${}_tr_\tau = |\tanh(a \cdot {}_t\psi_\tau^{L_i})|$ , where  $a > 0$  and  ${}_t\psi_\tau^{L_i} = p_\tau - ma_t^{L_i}$  defines a trading signal, namely the difference between the current price and a moving average of length  $L_i$  of the particular chartist,  $ma_t^{L_i} = 1/L_i \sum_{j=1}^{L_i} p_{t-j}^{\text{close}}$ . The limit order, submitted by the chartists with probability  ${}_tr_\tau$ , is  $({}_tq_{i\tau}, {}_tl_{i\tau})$  where

$$\begin{aligned} {}_tq_{i\tau} &= \text{sgn}({}_t\psi_\tau^{L_i}), \\ {}_tl_{i\tau} &= p_\tau(1 + \Delta \cdot {}_tz_\tau), \end{aligned}$$

${}_tz_\tau \sim N(0, 1)$  and the standard deviation  $\Delta > 0$  is related to the aggressiveness of the agents in increasing the bid or in reducing the ask with respect to the current intra-day price  $p_\tau$ . A large  $\Delta$  would produce bids that exceed the price by a large amount and the same holds for aggressively low asks. Smaller values for  $\Delta$ , conversely, would produce a lot of limit prices that are very close to the last price. Even if the proportion of improving bids or asks is constantly 50%, the latter case is likely to produce smooth price movements while the former has

<sup>3</sup>The reader should notice that, in the **low probability event** that  $p_{t-1}^{\text{close}} < p_t^* < p_\tau$ , a seller can issue with positive probability an order with a limit price smaller than  $p_t^*$ . However, given that other more advantageous bids may already be in the book, he could cash more than  $p_t^*$  even in this case. The same remark applies to buyers with obvious modifications.



the potential to induce large jumps in prices due to adjacent trades at rapidly increasing/decreasing levels<sup>4</sup>. It should be noted that this formulation captures the fact that fundamental agents use a different time scale to the chartists. The former are anchoring their limit price to the last closing price available while the latter are more sensitive to intra-day dynamics and focus on the actual price  $p_\tau$ , fostering at times spectacular increases of the traded volume within the day. This behaviour appears to describe rather convincingly some aspects of both fundamental and chartist trading, the latter being more hazardous and speculative.

In order to ensure the correct functioning of the CDA in every situation, a small amount of random trading must be introduced as, from time to time, all the agents may end up on the same side of the market and there would be no counterparty for any outstanding order. Hence, with probability  $p_\epsilon$ , agents will issue a random order (in place of what was described above) for a quantity  $\pm 1$  with equal probability and limit price given by  $p_\tau + \sigma_\epsilon {}_t z_\tau$ , where  ${}_t z_\tau \sim N(0, 1)$  is newly sampled whenever needed. The limit price is obtained by offsetting the last observed price  $p_\tau$  by a random amount, whose constant standard deviation is  $\sigma_\epsilon$ .

**2.2. The Switching of Trading Strategies.** The traders can switch strategy at the end of each day, when the closing price becomes available and they can evaluate their realized profit, if any. Let  $I_t \subseteq \{1, \dots, N\}$  be the set of agents who traded on day  $t$  at some price  $p_{\tau_i}$  and let  $X_{it} \in \{f, c\}$ ,  $i \in I_t$  be their state. They compute their realized profit according to

$$\pi_{it} = \begin{cases} p_t^{close} - p_{\tau_i} & i \in I_t \text{ is a buyer,} \\ p_{\tau_i} - p_t^{close} & i \in I_t \text{ is a seller.} \end{cases}$$

Then agents adjust an individual smoothed profit measure in their state as

$$U_{X_{it}}(i, t) = \pi_{it} + \eta U_{X_{it}}(i, t - 1), \quad i \in I_t,$$

where  $\eta(\in [0, 1])$  is a memory parameter. Observe that only agents who traded adapt the performance of the current state  $X_{it}$  whereas all the other agents  $j \notin I_t$  do not alter their profit measure  $U_{X_{jt}}(j, t) = U_{X_{jt}}(j, t - 1)$ .

---

<sup>4</sup>This mechanism is the reason why we do not model a ticked book, that is we do not force limit prices to be on a discrete grid of finite step-size  $\delta$ . Sequences of improving orders can drive the price considerably up or down even if the  $\delta$  is relatively small. Whereas, picking  $\delta \rightarrow 0$ , can basically lead to too little variation in prices and excessively peaked returns' distribution. Allowing for a continuous limit price offers considerable flexibility as it turns out that  $\Delta$  can be tuned more easily than the "corresponding" discrete tick  $\delta$ .

Finally, all fundamentalists switch to chartism with probability.

$$n_{c,i,t} = \frac{\exp(\beta U_c(i,t))}{\exp(\beta U_f(i,t)) + \exp(\beta U_c(i,t))}, \quad i = 1, \dots, N.$$

Equivalently, the probability of any chartist switching to the fundamentalist strategy is given by  $n_{f,i,t} = 1 - n_{c,i,t}$ ,  $i = 1, \dots, N$ . Here  $\beta > 0$  is a parameter related to the intensity of switching: small values of  $\beta$  make the agents insensitive to profits and prone to use the two strategies with equal probability. On the contrary, large values of  $\beta$  make them more likely to switch at once to the most profitable strategy at time  $t + 1$ . Our switching mechanism differs in two important ways from the standard proposal pioneered in Brock and Hommes (1998). A first difference lies in the use of individual switching probabilities to be contrasted with the global one that is used in CHH. In other words, agents of the same type can have rather different realized profit measures, due to different transaction prices (even on the same day) and different  $L_i$ 's. As a consequence, their switching can be driven by different probabilities. In the second place, the smoothed realized profit measure is updated by an agent only if he/she succeeds in trading. In the standard treatment, trading always occurs but in our setup this does not necessarily happen and we feel that there is no reason to update the accumulated profits if an agent fails to trade on a specific day. This means that, in such a case, we have  $U_{X_{it}}(i, t+1) = U_{X_{it}}(i, t)$ . A similar individual-based switching mechanism is used in Pellizzari and Westerhoff (2007).

**2.3. Timing.** A typical trading day  $t$  develops as follows and is illustrated in Figure 1:

- (1) At  $t^-$ , the end of day  $(t - 1)$ , the closing price  $p_{t-1}^{close}$  of the previous session or trading day  $t - 1$  and all the moving averages  $ma_t^{L_i}$ ,  $i = 1, \dots, N$  are available;
- (2) At time  $t^+$ , the beginning of day  $t$ , the agents start trading at random times  $t < \tau_i < t + 1$ , submitting their orders to the market (with no certainty that they will be executed);
- (3) In  $(t + 1)^-$  the closing price  $p_t^{close}$  for day  $t$  is known and traders hence can compute profits  $\pi_{it}$  and adjust their performance measure  $U_{X_{it}}(i, t)$ . Notice that if an agent is unable to trade, his/her  $U$  remain unchanged.
- (4) The complementary probabilities  $n_{f,i,t}$  and  $n_{c,i,t}$  are computed for all agents who possibly switch to the other strategy to be used starting at time  $(t + 1)^+$ .
- (5) New moving averages and new fundamental price can be computed to be used starting at time  $(t + 1)^+$ .

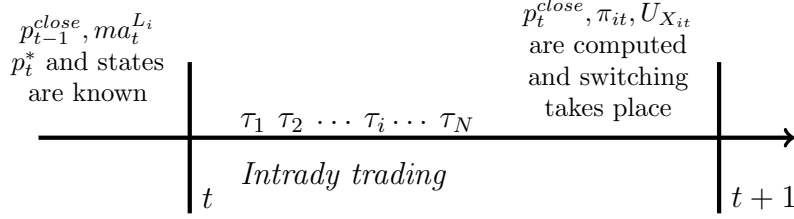


FIGURE 1. A schematic representation of the unfolding of a trading day in the model.

**2.4. The Market Protocol—CDA.** We describe in this subsection the set of rules that govern the trading process or, in brief, the microstructure of our model. A CDA allows agents to submit orders at any time. We consider only limit orders, that is quantity-price couples  $(q, l)$  to be interpreted as the binding promise to buy (sell)  $q$  units at a price no larger (smaller) than  $l$ . We stress that, once submitted orders cannot be cancelled or changed. Every positive real number  $l$  is a legal limit price and we restrict the quantity to be  $q = \pm 1$  to denote orders on the sell (-1) or buy (+1) side. All the orders are sorted, kept in a book and, if the book is non empty, let  $a_m \geq a_{m-1} \geq \dots a_2 \geq a_1 > b_1 \geq b_2 \geq \dots b_n$  be the sequence of asks and bids, denoted by  $a_i$  and  $b_j$ , respectively. The biggest bid  $b_1$  is called the *best bid* and the smallest ask  $a_1$  is called the *best ask*<sup>5</sup>. Whenever a new limit order  $(q, l)$  is submitted, it is matched against the opposite side to find the best compatible price. If it is possible, the order is executed at the price of the matched order (either  $a_1$  or  $b_1$ ). If no match is found, the order is inserted in the appropriate book. In more detail, if  $q = 1$  and  $l \geq a_1$  then one unit is exchanged at the price  $a_1$  between the agents whose orders crossed and the best ask is removed from the book; otherwise the submitted order is inserted among the bids so that the buying queue becomes  $b_1 \geq b_2 \geq \dots \geq b_j \geq l \geq b_{j+1} \geq \dots \geq b_n$ . In the same way, if  $q = -1$  and  $l \leq b_1$  then one unit is exchanged at the price  $b_1$  between the agents with crossing orders and the best bid is removed from the book; otherwise the submitted order is inserted among the asks so that the selling queue becomes  $a_m \geq a_{m-1} \geq \dots \geq a_j \geq l \geq a_{j-1} \geq \dots \geq a_1$ .

We assume that at the end of the trading day, the book is completely erased so that the next trading day begins with no queued orders. Tokyo Stock Exchange, for example, adopts this procedure while other

<sup>5</sup>Slightly different orderings are possible with orders having the same limit price, based on the quantity or the time of submission. In this paper, as all orders have unit quantity, we resort to strict time preference to break ties.

markets let some orders survive across “days” according to different rules.

### 3. EMPIRICAL EVIDENCE FROM THREE EXCHANGES

To get the flavor of some properties of daily returns of major European stock indices we consider the German DAX, French CAC, and English FTSE indices. The data, relative to two non-overlapping periods of 8 years (1992-1999 and 2000-2007), are sampled in business time, so that weekends and holidays are omitted<sup>6</sup>. Some descriptive statistics are reported in Table 1.

Period	Index	Max	Min	Sd	Skew	Kurt
1992-1999	CAC	0.06098	-0.05627	0.012074	-0.11737	4.7272
	DAX	0.05894	-0.06450	0.011938	-0.37973	6.1051
	FTSE	0.05440	-0.04140	0.009199	0.04947	5.3713
2000-2007	CAC	0.07002	-0.07678	0.013961	-0.09272	5.9616
	DAX	0.07553	-0.06652	0.015492	-0.04577	5.7472
	FTSE	0.05904	-0.05589	0.011292	-0.17404	5.8785

TABLE 1. Descriptive statistics of the returns of three European indices. We report the biggest and smallest returns in the period, volatility, skewness and kurtosis of returns.

There are some differences in the the two samples and the period 2000-2007 appears to be more volatile than the earlier one. Figures 2 and 3 show the autocorrelation of raw and absolute returns, their density and normal plot for the two periods.

The returns of the indices are nearly uncorrelated even if there are some significant coefficients at specific lags (in particular, there is a positive serial correlation at the first lag for the FTSE in the period 1992-1999). Evidence of long memory in absolute returns, extending for more than 30 lags, is evident in both periods but appears to be stronger in more recent years. The distribution of returns is leptokurtic compared to the corresponding normal plots, indicating quite fat tails and extreme events.

We are interested in reproducing some salient stylized facts of the real returns that are qualitatively stable across different indices and time-periods, such as insignificant correlation of returns but positive and persistent correlation of absolute returns, fat tails and positive excess kurtosis. In particular, while some of the just mentioned statistical regularities are difficult to obtain in the broad brush setup of the

<sup>6</sup>The source for the data is <http://finance.yahoo.com> and the logarithmic returns are computed using the ‘Close’ column. The number of available observations vary between 2002 and 2042 for the indices and periods we consider.

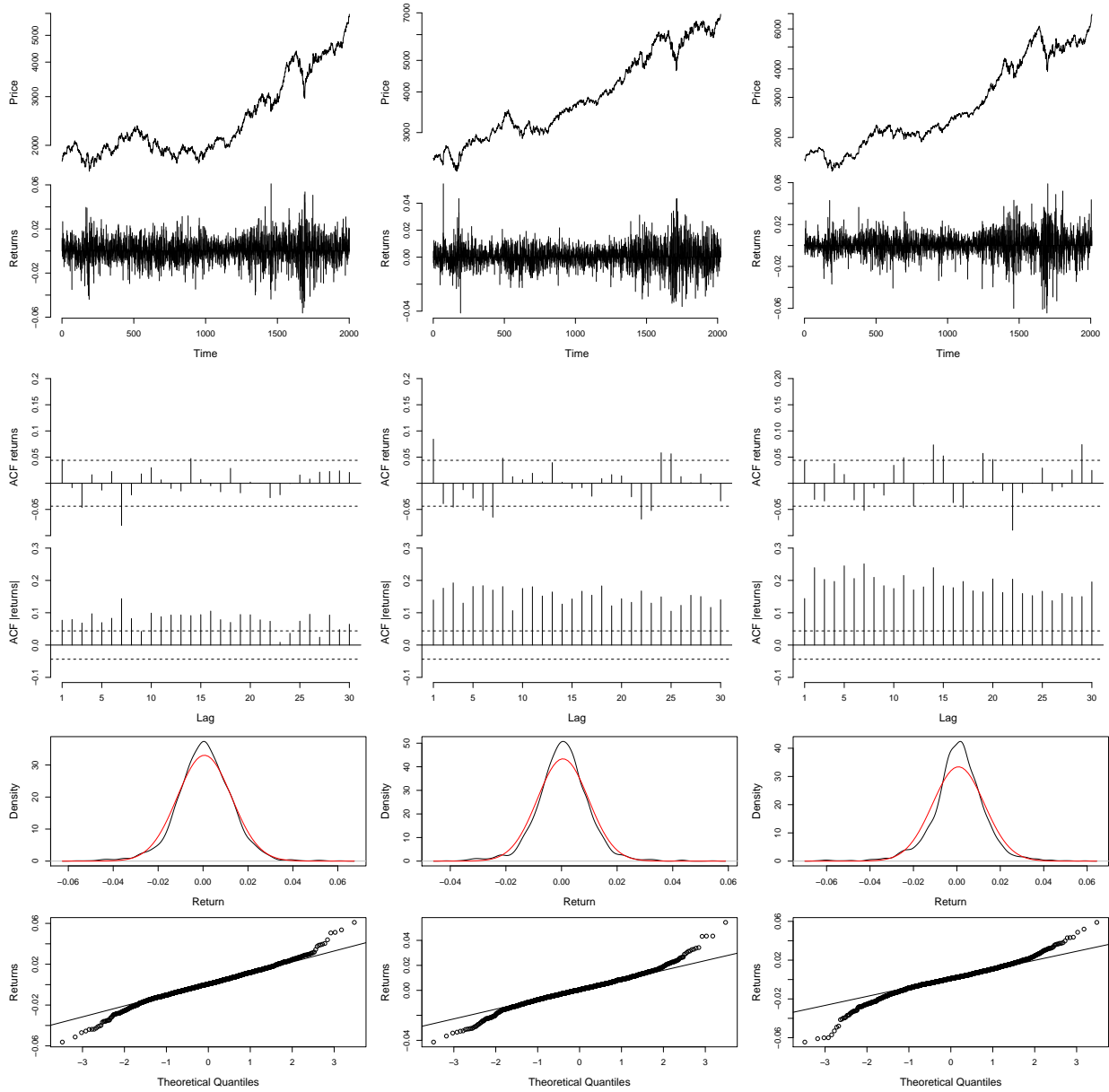


FIGURE 2. The graphs depict some properties of the returns of the CAC (left), FTSE (middle) and DAX (right) for the period 1992-1999. The autocorrelation of raw and absolute returns are shown in the first and second rows. The distribution of returns and a normal plot ( $QQ$ -plot), together with the line that would be obtained with normal returns, are drawn in the last two rows.

original CHH model, we find that the introduction of a realistic CDA allows the model to robustly generate these features.

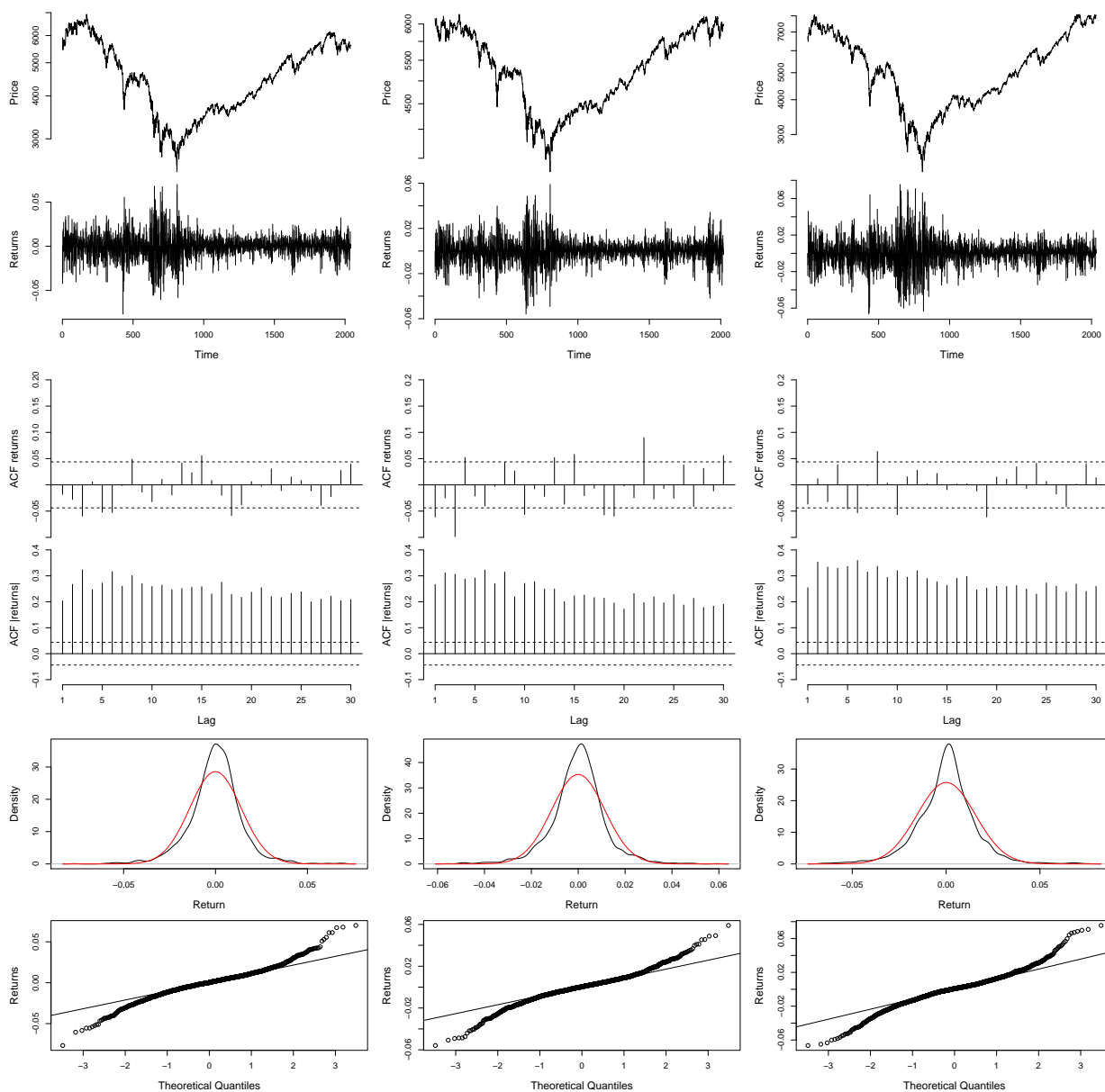


FIGURE 3. The graphs depict some properties of the returns of the CAC (left), FTSE (middle) and DAX (right) for the period 2000-2007. The autocorrelation of raw and absolute returns are shown in the first and second rows. The distribution of returns and a normal plot ( $QQ$ -plot), together with the line that would be obtained with normal returns, are drawn in the last two rows.

#### 4. SIMULATION RESULTS

**4.1. Parameter Selection.** We discuss in this section the results obtained by simulations of the model previously described. For each

parameter set we run the market 100 times for  $T = 2500$  trading days, constituting a period of about 10 years. The first 500 observations are discarded to avoid transient effects due mainly to the need to initialize randomly the moving averages<sup>7</sup>. We are then left with 100 series of 1,999 logarithmic returns that can be analyzed. The choice of the parameters is guided by the values that were used in CHH but still required some trial-and-error in order to get realistic time series, as in the most of time series analysis of heterogeneous agent-based models. Also it is often the case in agent-based models that the number of parameters is large as heterogeneity is allowed at the level of the single agent, for example, the length  $L_i$  of the moving average and initial endowments  $C_{i0}, S_{i0}$  differ across agents. However, we resort to the standard technique of sampling the individual parameters from a single distribution, thus cutting down enormously the number of effective parameters. All the length  $L_i, i = 1, \dots, N$ , are sampled from the set of integers  $\{20, 21, \dots, 100\}$ , that contains commonly used values for moving average lengths. Likewise, the distribution of the initial endowments is the same for each agent and it is chosen so that on average agents have a number of stock whose value is equal to the cash they hold. Given that no short-selling or borrowing is allowed, this means that there is no systematic bias in favor of buyers and sellers. The remaining parameters are listed in Table 2. Observe that  $\sigma_\epsilon$  is a constant fraction of the initial fundamental price  $p_0^*$  and that  $\alpha$  (reaction coefficient of the fundamentalists) and  $\beta$  (the intensity of switching), which are not individual parameters indexed by  $i$ , can have different values in some of the 100 simulations as they are uniformly drawn from a “small” set of nearby values. This is done to test for the local robustness of our results with respect to slight changes in  $\alpha$  and  $\beta$ .

**4.2. Time Series and Distribution Results.** Some representative time series are shown in Figure 4. The graphs depict in the two columns the results of two typical simulations. The first row of the picture shows the time series of the market price and fundamental value. They share a common feature found in CHH model, namely that the price is tracking the fundamental value but the deviations are persistent and sizeable. The strong bimodality of the distribution of the density of the difference  $p_t - p_t^*$  in the last row confirms that the price stays for long times either below or above the fundamental price, as can be verified by a careful study of the panels in the first row.

The logarithmic returns  $r_t = \log(p_t/p_{t-1})$  are represented for the same time span in the second row. There are episodes of large change in price (in absolute value) and visual evidence of some degree of volatility clustering when the price surges or crashes. The third and fourth

---

<sup>7</sup>Given that the length  $L_i$  of the moving average is at most  $L = 100$  and we discard 500 observations, the initial randomization should have little or no effect.

Param.	Value	Description
$N$	1000	Number of agents
$S_{i0}$	$\{1, 2, \dots, 9\}$	Initial stock endowment
$C_{i0}$	$1000S_{i0}$	Initial cash endowment
$p_0^{close}$	1000	Initial price
$p_0^*$	990	Initial fundamental value
$\alpha$	$\{\frac{17}{1000}, \frac{18}{1000}, \frac{19}{1000}\}$	Reaction coefficient for fundamentalists
$a$	0.1	Reaction coefficient for chartists
$L_i$	$\{20, 21, \dots, 100\}$	Length of MA windows
$\Delta$	0.005	Aggressiveness parameter
$\beta$	$\{\frac{1}{16}, \frac{1}{17}\}$	Intensity of switching
$\eta$	0.2	Profit smoothing parameter
$p_\epsilon$	0.05	Probability to issue a random order
$\sigma_f$	0.005	Volatility of fund. value (daily)
$\sigma_\epsilon$	$\sigma_f p_0^*$	Volatility of random offset by noise traders

TABLE 2. Parameters used in the simulation

rows illustrate the autocorrelation of  $r_t$  and  $|r_t|$ . The linear predictability of the returns is very weak, pointing to some form of efficiency of the market. At the same time the absolute returns are significantly correlated up to 20-25 lags thus confirming heteroskedasticity in returns. Also the seemingly decaying pattern of the significant autocorrelations of the absolute return indicates some sort of power-law or long memory behaviour in volatility.

Obtaining uncorrelated raw returns and long memory in the absolute returns are indeed the most difficult things to calibrate in most agent-based models (see Lux (2004) and He and Li (2007) for related discussion) and a subtle balance between  $\alpha$ ,  $\beta$  and  $\Delta$  in our model is needed. Loosely speaking, there must be occasional large returns and occurrences of “spikes” but they must not be too frequent in order to avoid serial positive correlation at low lags. Price spikes can be induced by increasing  $\beta$ , that triggers more switches to the current best performing strategy, and  $\Delta$ , which can cause avalanches of rapidly surging or dropping prices. At the same time,  $\alpha$  controls the activity of the fundamental traders who step in and reverse the trend. The fundamentalists are also exploiting the fact that the finite budgets of the chartists force them to exhaust their resources after prolonged trends.

The fifth row of Figure 4 shows that the distribution of returns is leptokurtic and fat tailed: the kurtosis for the depicted returns’ time series is 5.34 (left) and 29.30 (right).

**4.3. Market Fractions.** Figure 5 plots the fractions of fundamentalists (black) and chartists (grey) as a function of time. The technical



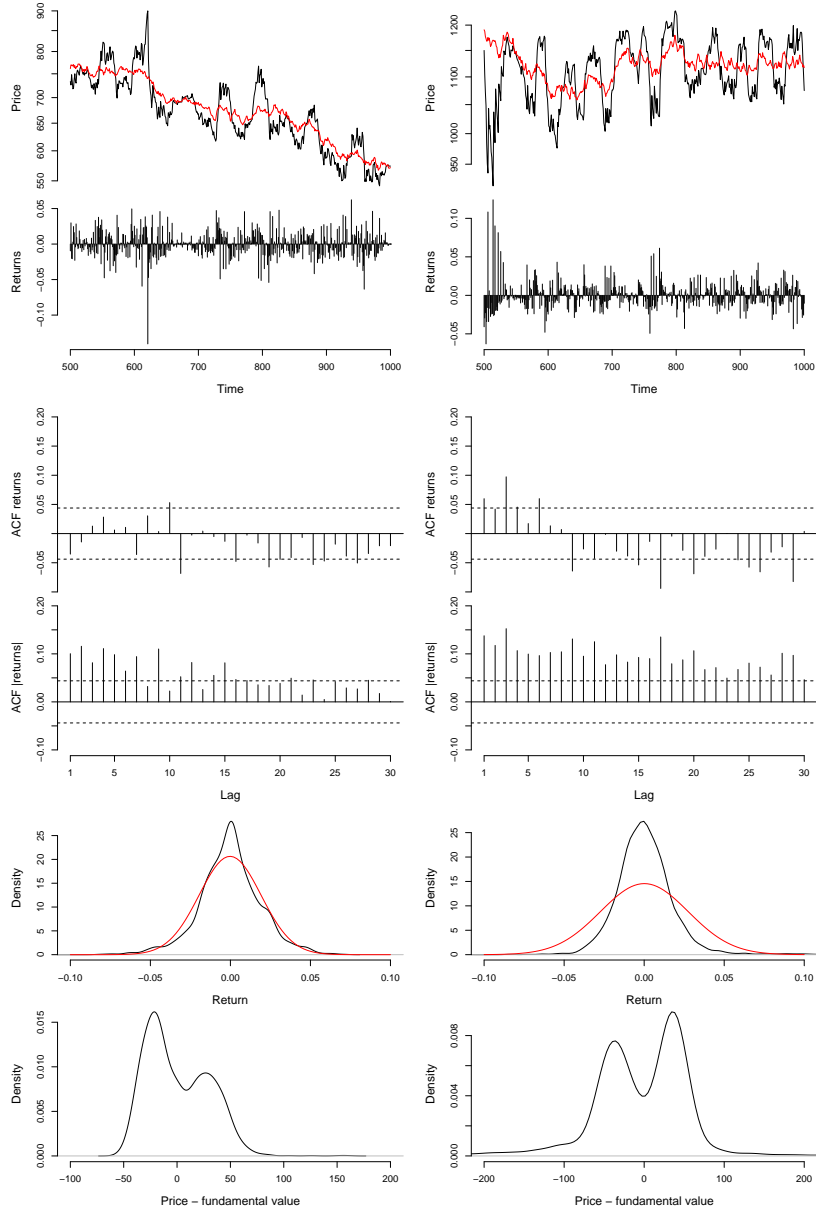


FIGURE 4. Some representative time series. From the top, the panels show the price and fundamental value; returns; autocorrelation of raw and absolute returns; density of returns (with a normal distribution with same mean and variance) and density of the difference between the price and the fundamental value.

component of the market is generically preponderant and, more importantly, it is apparent that bubbles and crashes are indisputably generated by large crowds of agents embracing the chartist view. One of the significant differences from the CHH model, even the Brock and Hommes model, is that the market fractions of the fundamentalists

are always below 50% while the market fractions of the chartists are always above 50%. This implies that the market is dominated by the chartists most of the time. We do not observe the dramatic switching of all the agents to either one of the trading strategies, which is the striking feature of switching models such as in the Brock and Hommes and CHH models. This difference is mainly due to the heterogeneity and diversity in the length of the moving averages used among the chartists.

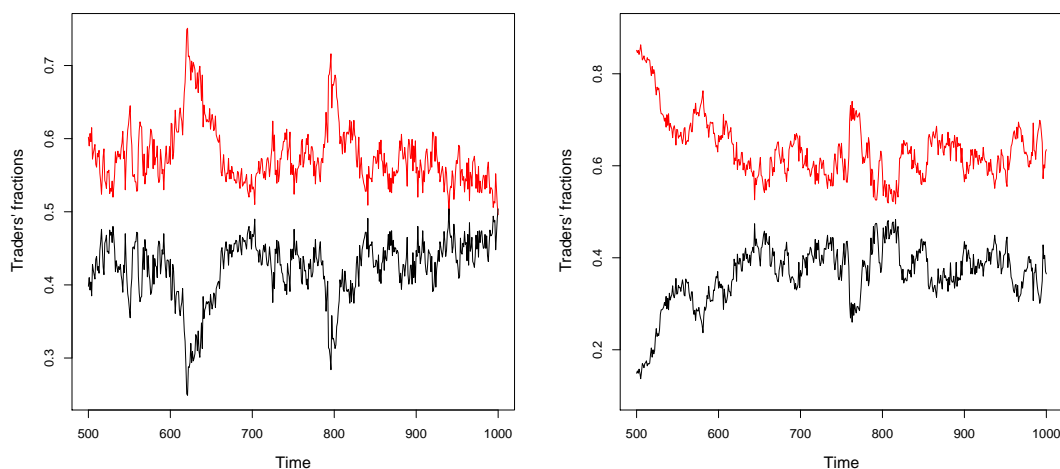


FIGURE 5. Evolution of the fraction of fundamentalist (black) and chartist (red) traders for the same time series depicted in Figure 4.

**4.4. Statistical Results.** Table 3 reports some descriptive statistics of the simulated returns averaged across the set of all our simulations. The maximum daily return, for example, exceeds 9.4% for half of our simulations, while the smallest return is smaller than  $-11.5\%$  in 50% of the cases. Some mild negative asymmetry is confirmed by the negative skewness in the time series of returns.

	Max	Min	Sd	Skew	Kurt	Volume
Median	0.09404	-0.11541	0.01564	-0.0321	9.631	162.2
Mean	0.21782	-0.24684	0.02097	-0.5365	55.343	160.4

TABLE 3. Descriptive statistics of the returns of the simulations of the model. We report the median and mean value (across 100 independent simulations) of the biggest and smallest returns, volatility, skewness and kurtosis of returns.

Table 3 confirms again that there is a fair amount of excess volatility and excess kurtosis. In all the simulations, the volatility of the fundamental process was fixed at 0.5% daily and hence trading is responsible for the inflated standard deviation of price returns (about 1.6%). The number of exchanged units (volume) is typically close to 160 per day.

#### 4.5. Power-law Behaviour Based on Monte Carlo Simulations.

In order to show effectively that many simulated time series exhibit very weak linear predictability but strong volatility clustering, we summarize the statistical properties of autocorrelations by taking averages across the simulations. We denote by  $\hat{\rho}_{jk}$  and  $\hat{\gamma}_{jk}$  the estimated  $j$ -lag autocorrelation of raw and absolute returns of the  $k$ -th simulation, respectively. The distribution of the sampled values  $\hat{\rho}_{jk}$  and  $\hat{\gamma}_{jk}$ ,  $k = 1, \dots, 100$  of the autocorrelation at  $j$  lags can then be graphically condensed for all  $j = 1, \dots, 30$ , as shown Figure 6. The graphs depict, for each lag  $j$ , a simplified version of the box-and-whisker plot of  $\hat{\rho}_{jk}$  and  $\hat{\gamma}_{jk}$ , see Becker et al. (1998) for details. In particular, all the medians indicated by thick horizontal lines, and most “boxes”, that lie between the first and third quartile, are well within a  $2\sigma$  confidence band (dashed lines) for the  $\hat{\rho}_{jk}$ . Despite some outliers at specific lags for some time series, the left part of the figure shows that about 50% of the simulations satisfy the strict requirement of having *all* autocorrelation coefficients within the band, thus pointing to the fact that the model is robustly generating extremely low linear predictability in returns.

The right graph of Figure 6 illustrates the distribution of the autocorrelations  $\hat{\gamma}_{jk}$  of absolute returns. Evidence of volatility clustering is present when correlations exceed the upper dashed line. More than 50% of time series have significant heteroskedasticity for more than 15 lags and one quarter of the simulations strongly extend this features for 30 lags. Both the realizations of Figure 4 are essentially in this set. The reader should realize that we are not claiming that all time series are equally realistic and there are manifestly outlying “bad” cases in terms of autocorrelation in Figure 6. Instead, this aggregate examination is meant to validate a broad set of simulations showing that very often the results of the model are quite satisfactory.

**4.6. Noise and Sensitivity Analysis.** In this subsection we discuss the sensitivity to some key parameters, focusing in particular on the effects of the various sources of noise that operate in our setup<sup>8</sup>. We recall that randomness has a role in several components of the model.

---

<sup>8</sup>We have discussed previously the outcomes of other parameters, like  $\alpha$  and  $\beta$ . The initial amount of risky units and cash, is also relevant. We feel that this is rather intuitive: for example, increasing the cash relative to the stock, can fuel longer and more pronounced rises of prices as agents can mechanically buy more stocks. In more realistic models, risk-related considerations are possibly limiting

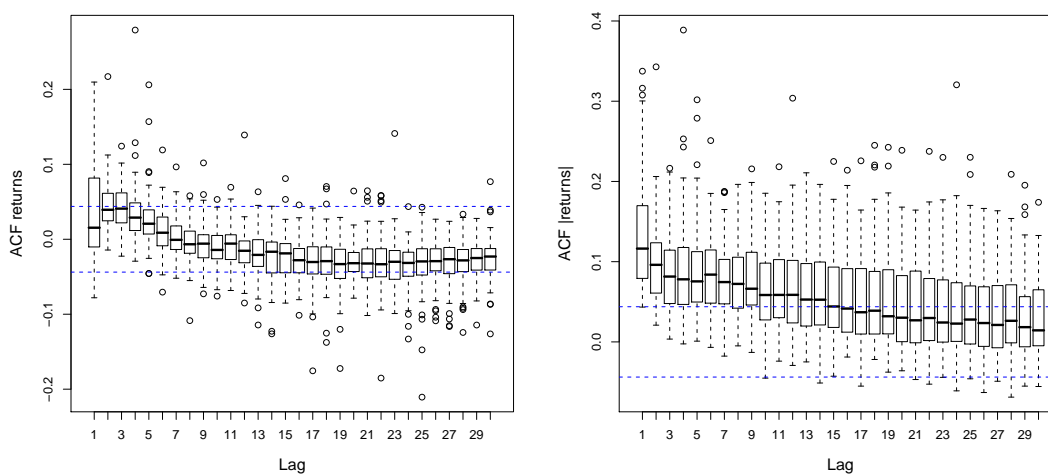


FIGURE 6. Autocorrelation of raw (left) and absolute returns (right). For each lag  $j$  on the horizontal axis we depict the box-and-whisker plot of the 100 coefficients  $\hat{\rho}_{jk}$  and  $\hat{\gamma}_{jk}$ ,  $k = 1, \dots, 100$ . The median is shown by the thick line and the “boxes” depicts the inter-quartile range of the data. Outlying points extending beyond the “whiskers” are visible as single points (circles).

The first one is the selection of the order (permutation) in which agents bid during a trading session. Second, the orders of the fundamentalists are randomly selected in the interval described by the fundamental value and the actual price. Third, chartists’ bids or asks offset the price by a random amount with standard deviation  $\Delta$  and, finally, the fundamental process changes are governed by  $\sigma_f$ . The model appears to be much more sensitive to the two last sources of noise and hence we limit our discussion to  $\Delta$  and  $\sigma_f$ . We also try to give some impression of the impact of the fraction  $p_\epsilon$  of noise traders.

Decreasing  $\Delta$  reduces the intensity of the stylized facts. Setting  $\Delta = 0.0025$ , that is halving the benchmark value, still produces uncorrelated, non-normal and leptokurtic returns, but only one quarter of the simulations display significant autocorrelations of absolute returns for up to 10 lags. The median (mean) volatility of returns decreases to 0.01125 (0.01155) and the kurtosis drops to median (mean) values of 4.15 (4.42). Figure 7 depicts a typical time series when  $\Delta = 0.0025$ . Doubling  $\Delta$  causes large and explosive swings in prices that break down the similarity to realistic time series.

---

the positions, but our simple agents are “dumb” in this respect and prone to take extreme position if they can.

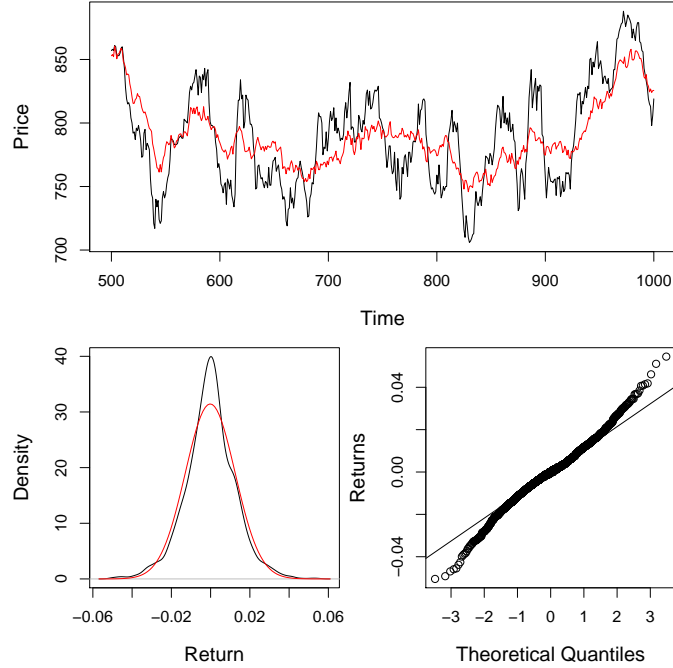


FIGURE 7. Price and fundamental value time series for one representative simulation obtained when  $\Delta = 0.0025$ . The density of returns (with a normal distribution superimposed in red) and a  $QQ$ -plot are also shown. The volatility and kurtosis of the depicted returns are 1.27% and 4.17, respectively.

Setting  $\sigma_f = 0.25\%$ , that is reducing the changes in the fundamental price, results in smoother and somewhat pseudo-cyclic time series with pronounced autocorrelation and very mild traces of heteroskedasticity. The median (mean) volatility and kurtosis across 100 simulations with  $\sigma_f = 0.25\%$  are 0.008955 (0.009061) and 3.87 (5.48). A typical time series in Figure 8, depicts only slightly non-normal features. Similar to what happens for large  $\Delta$ , increasing the size of  $\sigma_f$  to 1% daily produces excessive volatility and kurtosis, in the range 4-5% and 50-100, respectively.

To conclude this analysis, we investigate the importance of the proportion  $p_\epsilon$  of noise traders in the model. As we argued before, they are needed to “move” the price when all other agents are on the same side of the market. One could ask about the extent of the statistical properties that can be generated by noise traders alone. Indeed, Maslov (2000) and LiCalzi and Pellizzari (2003) argue that the CDA can generate some stylized facts even with very simple behaviour on the part of the agents. We run 100 simulations where only the fraction  $p_\epsilon$  of noise traders submits orders (while the fundamentalists and chartists are inactive) to evaluate the incremental effect of the intertwined action of

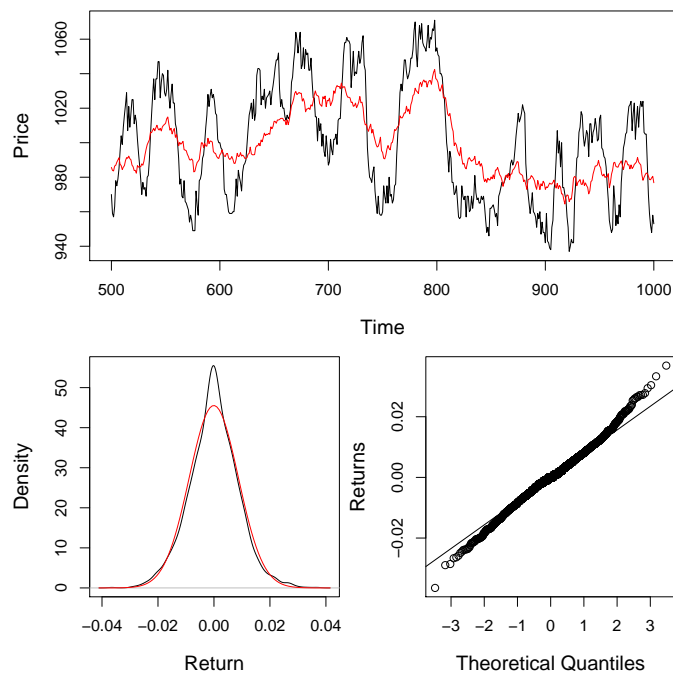


FIGURE 8. Price and fundamental value time series for one representative simulation obtained when  $\sigma_f = 0.25\%$ . The density of returns (with a normal distribution superimposed in red) and a  $QQ$ -plot are also shown. The volatility and kurtosis of the depicted returns for this realisation are  $0.88\%$  and  $3.73$ , respectively.

chartists and fundamentalists. The time series produced in these purely noisy markets are random-walk like and there is no connection between the fundamental value and the price of the stock. This is obvious as no trader is using  $p_t^*$  to submit orders and, not surprisingly, the returns are white and there is no autocorrelation of absolute returns at any lag. The median (mean) volatility and kurtosis across all the simulations are  $0.01214$  ( $0.01211$ ) and  $4.480$  ( $4.508$ ). Hence, purely noisy markets exhibit insignificant correlations and some degree of leptokurtosis in returns, confirming the findings of the previously cited works, but there is no volatility clustering and smaller standard deviation. Moreover, no herding due to switching is detected as active agents just bid or ask in an entirely random manner and the performance measure is erratic. All of this evidence indicates that the noise traders alone are not responsible for volatility clustering and the long memory observed when both the fundamentalists and chartists are active in the market. To summarize, our results are definitely richer than the ones that can be obtained with purely random traders even if some stylized facts can still be obtained in a weak form in this case.

## 5. CONCLUSION

Inspired by the theoretically oriented CHH model under the market maker market clearing mechanism, this paper conducts a dynamic analysis of a microstructure model of continuous double auctions. The model removes some less realistic assumptions in the CHH model, including the fixed length of the moving average window, unlimited short selling and borrowing, trading of fractional shares, and no intra-day trading, in particular, the homogeneity amongst each type of the fundamentalists and chartists. With a realistic market microstructure, the model is able not only to obtain the results of the CHH model but also to characterise most of the stylized facts including the power-law behaviour in the volatility. Our results seem to suggest that a comprehensive explanation of several statistical properties of the returns is possible in a framework where both *behavioral* traits and *realistic microstructures* have a role.

In this paper, we have not paid attention to the dynamics of the intra-day price. Also, it is not clear whether and to what extent other clearing mechanisms than the CDA, like automated dealerships or hybrid markets, would affect our results. We leave these issues for future research.

## REFERENCES

- Becker, R. A. and Chambers, J. M. and Wilks, A. R., (1988), ‘The new S language: a programming environment for data analysis and graphics’, Wadsworth and Brooks/Cole Advanced Books & Software.
- Brock, W. and Hommes, C. (1997). A rational route to randomness. *Econometrica*, 65:1059–1095.
- Brock, W. and Hommes, C. (1998). Heterogeneous beliefs and routes to chaos in a simple asset pricing model. *Journal of Economic Dynamics and Control*, 22:1235–1274.
- Chiarella, C., Dieci, R. and Gardini, L. (2002), ‘Speculative behaviour and complex asset price dynamics’, *Journal of Economic Behavior and Organization* **49**, 173–197.
- Chiarella, C., Dieci, R. and Gardini, L. (2005), ‘The dynamic interaction of speculation and diversification’, *Applied Mathematical Finance* **12**(1), 17–52.
- Chiarella, C., Dieci, R. and He, X. (2006), ‘Heterogeneous expectations and speculative behaviour in a dynamic multi-asset framework’, *Journal of Economic Behavior and Organization* **62**, 402–427.
- Chiarella, C., Dieci, R. and He, X. (2009), Heterogeneity, market mechanisms and asset price dynamics., *in* ‘Handbook of Financial Markets: Dynamics and Evolution’, 277–344, Eds. T. Hens, K. Scheink-Hoppe. Elsevier.
- Chiarella, C. and He, X. (2001), ‘Asset price and wealth dynamics under heterogeneous expectations’, *Quantitative Finance* **1**, 509–526.
- Chiarella, C. and He, X. (2002), ‘Heterogeneous beliefs, risk and learning in a simple asset pricing model’, *Computational Economics* **19**, 95–132.
- Chiarella, C. and He, X. (2003), ‘Heterogeneous beliefs, risk and learning in a simple asset pricing model with a market maker’, *Macroeconomic Dynamics* **7**, 503–536.

- Chiarella, C., He, X. and Hommes, C. (2006a), 'A dynamic analysis of moving average rules', *Journal of Economic Dynamics and Control* **30**, 1729–1753.
- Chiarella, C., He, X. and Hommes, C. (2006b), 'Moving average rules as a source of market instability', *Physica A* **370**, 12–17.
- Chiarella, C. and Iori, G. (2002), 'A simulation analysis of the microstructure of double auction markets', *Quantitative Finance* **2**(5), 346–353.
- Chiarella, C., Iori, G. and Perellò, J.(2009), 'The Impact of Heterogeneous Trading Rules on the Limit Order Book and Order Flows', *Journal of Economic Dynamics and Control*, **33**(3), 525–537.
- DeGrauwe, P. and Grimaldi, M. (2006), 'Exchange rate puzzles. a tale of switching attractors', *European Economic Review* **50**, 1–33.
- Gaunersdorfer, A. (2000), 'Endogenous fluctuations in a simple asset pricing model with heterogeneous agents', *Journal of Economic Dynamics and Control* **24**, 799–831.
- Gode, D. and Sunder, S. (1993). Allocative efficiency of markets with zero intelligence traders. *Journal of Political Economy*, 101:119–137.
- He, X. and Li, Y. (2007), 'Power law behaviour, heterogeneity, and trend chasing', *Journal of Economic Dynamics and Control* **31**, 3396–3426.
- He, X. and Li, Y. (2008), 'Heterogeneity, convergence and autocorrelations', *Quantitative Finance* **8**, 58–79.
- Hommes, C. (2001), 'Financial markets as nonlinear adaptive evolutionary systems', *Quantitative Finance* **1**, 149–167.
- Hommes, C. (2002), 'Modeling the stylized facts in finance through simple nonlinear adaptive systems', *Proceedings of National Academy of Science of the United States of America* **99**, 7221–7228.
- Hommes, C. (2006), *Agent-based Computational Economics*, Vol. 2 of *Handbook of Computational Economics*, pp. 1109–1186, chapter 23, Heterogeneous Agent Models in Economics and Finance, North-Holland.
- LeBaron, B. (2006), *Agent-based Computational Economics*, Vol. 2 of *Handbook of Computational Economics*, pp.1187–1233, chapter 24, Agent-based Computational Finance, North-Holland
- LiCalzi, M. and Pellizzari, P. (2003). Fundamentalists clashing over the book: a study of order driven stock markets. *Quantitative Finance*, 3:470–480.
- Lux, T. (2004), *Power Laws in the Social Sciences: Discovering Complexity and Non-Equilibrium in the Social Universe*, Cambridge University Press, submitted Financial Power Laws: Empirical Evidence, Models and Mechanisms.
- Lux, T. (2009), Stochastic behavioural asset pricing and stylized facts, in 'Handbook of Financial Markets: Dynamics and Evolution', 161–215, Eds. T. Hens, K. Scheink-Hoppe. Elsevier.
- Lux, T. (2008). Stochastic behavioral asset pricing models and the stylized facts. Technical Report 1426, Kiel Institute for the World Economy.
- Maslov, S. (2000). A simple model of an order-driven market. *Physica A*, 278:571–578.
- Pagan, A. (1996), 'The econometrics of financial markets', *Journal of Empirical Finance* **3**, 15–102.
- Pellizzari, P. and Westerhoff, F. (2007). Some effects of transaction taxes under different microstructures. Research Paper Series 212, Quantitative Finance Research Centre, University of Technology, Sydney.
- Westerhoff, F. (2003), 'Speculative markets and the effectiveness of price limits', *Journal of Economic Dynamics and Control* **28**, 439–508.
- Westerhoff, F. (2004), 'Multiasset market dynamics', *Macroeconomic Dynamics* **8**, 591–616.