

Nursing
Midwifery
Palliative Care
Public Health
Diabetes Education and Management
Health Services Management
High Performance Sport



Health

Postgraduate
Courses
2020

UTS Faculty of Health



Contents

Welcome	02
Join us at the top	04
Why study a postgraduate health degree?	05
How will postgraduate study work for you?	06
Your study options	08
Postgraduate coursework	
Nursing	10
Midwifery	18
Palliative Care	22
Public Health	26
Diabetes Education and Management	30
Health Services Management	32
High Performance Sport	38
Research	42
Research degrees	43
Choose your course	44
Application journey	46
Key information	47
UTS Graduate Attributes	48

Faculty snapshot

4,302	total students
3,448	undergraduate students
671	postgraduate students
183	postgraduate research

UTS at a glance




45,930	students
15,134	international students
33,070	undergraduate students
10,720	postgraduate coursework
2,140	higher degree research students
3,896	staff

UTS student diversity

49%	female students
51%	male students
31%	are 25 or older
49%	also speak a language other than English

Please note the above numbers are approximate as of November 2018

Connect with us

	UTSHealth
	UTSHealth
	UTS Health
	UTS_Health

health.uts.edu.au/future

Acknowledgement of Country

UTS acknowledges the Gadigal People of the Eora Nation, the Boorooberongal People of the Dharug Nation, the Bidiagal people and the Gamaygal people upon whose ancestral lands our university stands. We would also like to pay respect to the Elders both past and present, acknowledging them as the traditional custodians of knowledge for these lands.

Welcome



A message from the Dean

Welcome to the Faculty of Health at UTS. Our mission is to support and develop a health care workforce that provides responsive leadership and direction in a rapidly changing environment. We strive for excellence and impact in all that we do, across learning and teaching, research and community engagement.

Joining UTS Health is a career decision that will transform you personally and professionally. For me, health care is, and has always been – about people. UTS is a place of great opportunity, excellent values, known for its spirit of collaboration and working for community good. As a faculty, we aspire to do everything we can to support and improve health, wellbeing and quality of life for all.

Our world-leading status is reflected in our rankings, most notably in our nursing and midwifery disciplines, ranked 1st in Australia and 10th in the world**, and in sport and exercise science, ranked 4th in Australia**.

I hope you will join us on our quest as a globally engaged world-leading Faculty of Health and become part of our future!

Professor Suzanne Chambers AO

RN, BA, BBehSc (Hons), PhD
Dean
Faculty of Health

Our difference

There are countless reasons to pursue a postgraduate qualification. Are you a lifelong learner with a thirst for knowledge? Do you want to diversify your experience or skills? Extend your knowledge in a specific field? Enhance your career prospects – or your earning capacity – with specialist training? Whatever your motivation, our courses can expand your horizons – professional, personal, intellectual – in a wealth of ways.

There are lots of health degrees out there. So why should you choose ours?

- **Reputation:** We are held in high esteem by industry and the profession.
- **Flexible:** We offer a wealth of course articulation options, so you can exit or upgrade your qualification as you choose.
- **Location:** Our campus sits at the heart of one of the world's great cities. There's no better place to be.

- **Research excellence:** We are known for producing future-focused, highly applied research that makes a difference. In the 2018 Excellence in Research for Australia initiative, we were rated 4/5 (above world standard) for Public Health and Health Services, Complementary and Alternative Medicine, and 5/5 (well above world standard) for Nursing and Midwifery.
- **Research integration:** Our course content and research go hand in hand, so what you learn in the classroom reflects the latest knowledge in the field.
- **Model of learning:** UTS's unique learning.futures model integrates online and face-to-face learning, 21st century learning environments, and extensive industry connections.
- **Global connections:** We have active partnerships with global health leaders like the World Health Organization, and Kings College, London.
- **Expert staff:** Be taught by internationally recognised health experts and researchers, who improve practice and inform policy in the real world and then inject that back into our curriculum.

Connections that count

Connections are crucial, especially when it comes to the world beyond our campus. At UTS, we are known for our extensive industry and academic networks, both here and overseas. We use those connections to ensure our course content and research programs remain globally and professionally relevant. This means that what we do, how we teach and the problems we solve through research have a positive impact on the broader health care sector.

Our partnerships

Through our work with the World Health Organization (WHO) Collaborating Centre for Nursing, Midwifery and Health Development, we are part of an international health care network that supports WHO objectives for global public health.

Closer to home, our academic team have developed a wealth of research partnerships with organisations across the health care disciplines, including sub-acute, community and aged care facilities.

Some of our key partnerships include:

- The Sydney Partnership for Health, Education, Research & Enterprise (SPHERE) with Faculty of Medicine UNSW and Local Health Districts.
- The Health-Science Alliance based at the University of New South Wales' (UNSW) Randwick Campus.

Dean's Industry Advisory Board

We are honoured to host an outstanding group of current leaders in health on our Dean's Industry Advisory Board. The group provides high-level strategic advice across our curricula, research, strategic direction, as well as links to key professional, industry and government bodies.

Chair:

Associate Professor Beth Kotze
Director (Mental Health – Children & Young People)
Mental Health Drug and Alcohol Office,
Ministry of Health

Members:

Ms Ann Brassil
CEO
Family Planning NSW

Ms Elizabeth Chatham
Executive Director, Woman, Youth and Children Division
ACT Health

Ms Jacqui Cross
Chief Nursing and Midwifery Officer
NSW Health

Ms Leslie Everson
Regional Director
Southern Cross Care

Ms Bernadette (Berne) Gibbons
Adjunct Associate Professor
Faculty of Health, UTS

Mr Robert Mills
Chief Executive Officer
Tresillian

Ms Donna Murray
CEO
Indigenous Allied Health Australia

Adjunct Professor Tim Smyth
Adjunct Professor
Faculty of Health, UTS

Adjunct Professor Annette Solman
Chief Executive
Health Education & Training Institute (HETI)

Adjunct Professor Robert Wells
Centre for Health Economics Research and Evaluation (CHERE), UTS



*Times Higher Education 150 Under 50 rankings, 2015-2019.
QS World University Rankings Top 50 Under 50, 2016-2019.
**QS World University Rankings by Subject 2019.

Join us at the top

No. 1

for nursing and midwifery
in Australia and
no. 10 in the world

(QS World University Rankings by
Subject 2019)

No. 4

for sports-related
subjects in Australia and
no. 24 in the world

(QS World University Rankings by
Subject 2019)

**RATED
5/5**

(well above world standard)
for nursing and midwifery,
human movement and
sports science research
(ERA 2018)

THERE ARE

16

nursing and midwifery
clinical simulation
laboratories at UTS.

No. 1
young uni
in Australia

(QS Top 50 Under 50 2019, THE Young
University Rankings 2018)

**RATED
4/5**

(above world standard) for
public health and health
services, complementary
and alternative medicine
research (ERA 2018)

The
UTS IMPACCT

centre encompasses the
Palliative Care Clinical
Studies Collaborative
(PaCCSC) – the largest
palliative care clinical trials
group in Australia.

Why study a postgraduate health degree?



Some people invest in further study because it is required for career progression. Others have reached their preferred level but similarly want to increase their depth of knowledge and experience so they can take on work that is more challenging, stimulating and ultimately, rewarding. Our postgraduate degrees are highly respected by industry, and so are our graduates. Find out where a UTS postgraduate health qualification can take you.

The health care and social assistance sector is projected to have the largest employment increase by 2023 – increasing by **250,300 jobs (14.9%)**

(Department of Jobs and Small Business, 2018 Employment Projections, five years to May 2023)

Advance your practice

Don't just learn new skills – master them. Our postgraduate courses are all about gaining specialist expertise that can give you an edge in your preferred health area.

Tread a new career path

Got a health qualification but want to expand your skillset? Working in another field but think health might be for you? Our degrees are open to those with current health experience, as well as those looking to make a career u-turn.

Get recognised

Many of our degrees have been designed to prepare you for professional accreditation. From nursing and midwifery to diabetes education and high-performance sport, you'll gain the requisite skills and practical experience for recognition in your chosen field.

Get hands on

Clinical practice, professional internships and research-inspired coursework – these are just some of the ways that we help you build industry experience as part of your health degree. You'll build practical skills and see your future career firsthand, long before you finish your studies.

Grow your professional network

Strategic relationships are a key part of any career. At UTS, we'll help you build them. From networking with peers across the Faculty of Health to meeting industry leaders through guest lectures and professional placements, our courses are the launching pad for a wealth of opportunities.

How will postgraduate study work for you?

Flexible study modes, online learning, and stackable qualifications that let you work at your own pace? That's what our postgraduate health courses are all about.

Study how you want, when you want

Our degrees fit in with you – not the other way around. From part-time study options to online or blended learning taught in block mode on campus, our range of learning modes will help you juggle work, study and life.

Recognition of prior learning

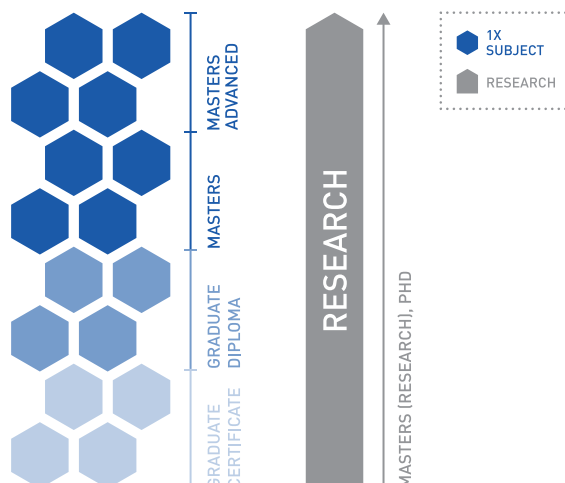
Don't relearn what you already know – at UTS, you can receive up to 48 credit points of subject exemptions if you've studied subjects similar to those in your UTS degree.

Central location

It's a fact: you can't beat UTS for convenience. We're at the heart of one of the world's great cities, just steps from Central Station, with a growing technology and innovation precinct right on our doorstep.

Start small and work your way up

Not quite sure what your end goal is? Our nested degrees let you start – or finish – with a shorter qualification that suits your professional aspirations. Whether you complete with a graduate certificate, a graduate diploma or the full master's degree, you'll wind up with a qualification from one of the leading health faculties in the country.



Start even smaller with UTS Open

If you're not ready to commit to postgraduate study, or if you want to upskill in a highly specific area, we've got a course for that too! We've created UTS Open – a collection of online courses ranging from three to five hours that draw from content in UTS postgraduate degrees to teach commercially-orientated skills. UTS Open offers a range of flexible, expert-led, online short courses designed to expand your career options and get you ready for the future of work.

Head to open.uts.edu.au

Support while you study

At UTS, we want you to succeed. Here's just some of the people and services here to help you:

- **Higher Education Language and Presentation Support (HELPS):** HELPS Advisors can help you with improving assignments, becoming a better writer, building your confidence in public speaking and more. They also provide online self-help resources covering essential academic skills.
- **Library:** UTS Library has a range of information, workshops and services to help you focus your study skills, including group work, time and stress management, referencing, presentations and even social media.
- **Health and wellbeing:** Benefit from an on-campus medical service, counselling service and support groups.
- **Careers service:** UTS Careers understands that postgraduate students' needs, concerns, and time pressures differ. They'll support you throughout your studies to achieve your career goals, by offering Drop-in, Career Consultations, CareerHub and ways to connect with fellow students.
- **Financial assistance:** The Financial Assistance Service can assist you with practical and financial aspects of life at university, such as laptops and textbooks, loans and grants, tax returns, budgeting and advice for financial hardship.
- **Online learning:** UTS Online is part of our integrated online and face-to-face blended learning environment. Find your subject outlines, announcements, class notes and reading materials here. You can create portfolios, complete assessments and utilise communication tools – and there's an app version for your mobile. Even better, we're launching our first postgraduate subjects using Canvas in 2020. We've been busy transforming the way we approach postgraduate course design UTS-wide, to enhance your learning experience in a contemporary digital environment.

Leap into life on campus

Get involved in some of the many clubs, societies and social sports programs that UTS has to offer. Here are just a few of the health related societies and activities that you might like to join.

- **UTS Medical Society (MedSoc):** MedSoc represents a wide variety of students from medical and health related sciences at UTS. You'll be able to meet other passionate health students through all their exciting social events and develop your professional connections within the industry, with career and networking opportunities.
- **Rural and Indigenous Health Society (RIHS):** If you want to make a positive impact during your studies, RIHS are looking for individuals like you. RIHS focuses on raising awareness and advocating for health issues faced by rural and Indigenous communities. You will collaborate with not-for-profit organisations and work across all aspects of health – emotional, environmental, mental, physical, social and spiritual.
- **Nursing and Midwifery Society (NaMSoc):** NaMSoc brings together nursing and midwifery students at UTS, to connect with each other and enhance their social and educational experience at university.
- **Women in Sport (WiS):** The WiS Program is aimed at providing opportunities for and encouraging the participation of women in sport at UTS. Join for free and fun sporting events.

Learn more and sign up at activateuts.com.au



Your study options

GRADUATE CERTIFICATE

A Graduate Certificate is an introductory course, which allows students to develop specialised skills in selected subjects or a discipline. Usually there are articulation arrangements in place providing students with the opportunity to move into the Graduate Diploma or Master's Degree if they meet the admission requirements for that course.

24CP
Usually 4 x Subjects

1
year

GRADUATE DIPLOMA

A Graduate Diploma is of a shorter duration than a Master's Degree and enables students to advance their professional and personal development within a selected discipline.

48CP
Usually 8 x Subjects

1-2
years

MASTER'S DEGREE

A Master's Degree is an advanced course for professionals or graduates who have completed a Bachelor's Degree and are looking to develop management and leadership knowledge and skills in a chosen discipline or field.

72CP
Usually 12 x Subjects

1.5-3
years

MASTER'S DEGREE (ADVANCED)

96CP
Usually 16 x Subjects

2-4
years

MASTER'S DEGREE BY RESEARCH

A Master's Degree by Research is an advanced course, designed for students to develop advanced research skills.

4-8
years

PHD/DOCTORATE

A PhD and other types of Doctoral degrees are the highest academic degree based on producing original research that makes a significant contribution to a chosen field.

4-8
years

CP = Credit Point

Credit Points are the value assigned to each subject in your course. Most subjects are offered in Autumn or Spring session, last for a single session and have a value of 6cp (unless you are studying a public health degree - where some core subjects last for half a session and have a value of 3cp).



For information on graduate entry master's degrees in health, including clinical psychology, genetic counselling, good manufacturing practice, orthoptics, physiotherapy, pharmacy and speech pathology, refer to the UTS Graduate School of Health Postgraduate Course Guide or visit gsh.uts.edu.au



Nursing

You're practising in a dynamic profession. Where to from here? Our postgraduate nursing degrees are for Registered Nurses who want to drive better outcomes for patient-centred care in advanced clinical settings. Take the next step in your career – towards enhanced care provision, better patient outcomes, and the leadership or specialist nursing roles you have always wanted to pursue.



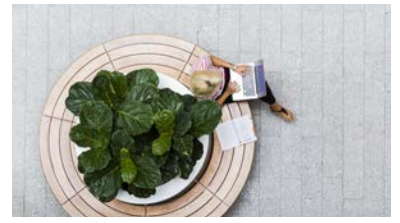
Tailored nursing courses

Personalise your learning. Mix and match majors, sub-majors and electives to create a program that's right for you. Our nested courses allow easy progression from a Graduate Certificate to a Graduate Diploma to a Master's.



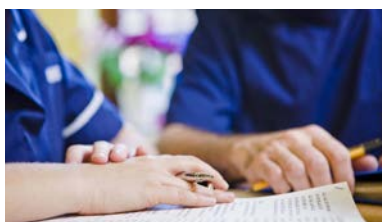
Flexible online and face-to-face study

Work. Study. Life. Our blended learning model integrates the best mix of online and intensive study days with master classes and clinical simulation in state-of-the-art teaching labs to ensure your valuable time is well spent.



Content developed with industry

Put your learnings into practice with a contemporary and responsive curriculum that's industry-aligned. UTS works with key health care partners, public health organisations and consumers to shape and deliver up-to-the-minute content that prepares you with in-demand skills to meet the ever-growing needs of patients and employers.



Expert staff

Learn from internationally recognised nursing experts and researchers who continue to improve practice and inform policy globally. UTS is ranked 10th in the world and we're #1 in Australia for Nursing and Midwifery*, based on our academic expertise, employability of graduates, and research impact. We'll provide you with the advanced skills and knowledge to become an integral part in improving patient-centred care, and to apply evidence-based research in your health care setting.



* QS World University Rankings by Subject 2017-2019

Advanced Nursing

Upskill to lead improvement in person-centred care and patient outcomes. Our courses for **Registered Nurses** have a strong focus on person-centred learning, underpinned by rigorous academic inquiry and the latest in international research and evidence-based best practice. In the master's degree you can tailor your program to suit your interests and career aspirations – mix and match seven majors with nine sub-majors and numerous elective options.

Advanced Nursing offers an articulated program. The degrees share subjects, allowing credit recognition for previously completed coursework.



Gail Forrest
Lecturer, Nursing
RN, MResEd, Cert IV Training
and Assessment

“What sets UTS postgraduate nursing programs apart is that they are innovative, future-focused and they’re genuinely responsive to the needs of both the health system and its consumers. Students benefit from the expertise of our academics who are recognised clinical leaders, many of whom are currently practising in their field and actively involved in research.”

MASTER of Advanced Nursing

C04228

Credit Points: 72

Structure: Various (see page 13)

Intake: Autumn, Spring

Duration: 1.5 years full time or part-time equivalent

Teaching Mode: Mix of online and on campus

Gain the skills to work as an advanced clinician, manager or educator. The Master's degree prepares you to take on the challenges and complexities of leadership roles in nursing. You have the flexibility to choose subjects that reflect your professional interests, and you will gain academic experience and a qualification that is highly respected in industry.

uts.edu.au/course/c04228

GRADUATE DIPLOMA in Advanced Nursing

C07044

Credit Points: 48

Structure: 2 Core Subjects, 2 Elective Subjects and 4 Sub-Major Subjects (or No Sub-Major - choose Elective Subjects)

Intake: Autumn, Spring

Duration: 1 year full-time or part-time equivalent

Teaching Mode: Mix of online and on campus

This course is for nurses who want to expand their career opportunities and influence positive change in the workplace, but are unsure about committing to a master's degree. Core subjects, electives and a clinical specialty will develop and extend your knowledge, specialised skills and clinical competencies. Graduate ready to take on leadership roles and actively contribute to improving practice.

uts.edu.au/course/c07044

GRADUATE CERTIFICATE of Advanced Nursing

C11246

Credit Points: 24

Structure: 2 Core Subjects and 2 Elective Subjects

Intake: Autumn, Spring

Duration: 1 year part-time

Teaching Mode: Mix of online and on campus

Additional notes: This course is not offered to international students

Develop the knowledge, skills and expertise to enhance the quality of care for patients and their families, using evidence to make informed decisions about nursing practice. Graduate as an advanced nurse at graduate certificate level.

uts.edu.au/course/c11246

Careers

Leadership positions, advanced roles and specialisations in areas such as clinical (e.g. acute care, chronic and complex care), primary health care, palliation, aged care, education, management and research.

Admission requirements

- **Qualifications:** Bachelor's degree (or equivalent or higher qualification), or evidence of general and professional qualifications that demonstrates potential to pursue graduate studies.
- **Registration:** Hold current registration as a nurse in Australia.
- **Experience:** In some cases, applicants must have concurrent employment in the specific specialty clinical area of study and one year of post-registration clinical experience. Suitability for enrolment will be determined by the course coordinator.

Clinical Accreditation Programs (CAP)

Certain public and private hospitals, local health districts and other agencies offer CAPs – each related to a particular specialty area. If you have completed, or are completing a certain CAP, you may be exempt from the Specialty Clinical Practice subject when studying a Graduate Certificate, Graduate Diploma or Master's degree.

For more information visit health.uts.edu.au/caps

Master of Advanced Nursing: Course program

WHAT WILL YOU STUDY?

Majors (Choose 1)

Education

Designed for nurses who are passionate about education and helping patients, colleagues and nursing students develop their knowledge and improve their practice. Through a combination of clinical and education subjects, you will deepen your knowledge of adult education theory and practice and learn how to use processes to build capacity at all levels of the nursing workforce.

Structure:

6 Core Subjects, 2 Elective Subjects and 4 Sub-Major Subjects

Sample subjects

- Health Promotion
- Facilitation of Clinical Learning
- Education for Practice Development

Clinical

Designed to empower nurses to take on the challenges and complexity of clinical leadership in nursing.

If you want a leadership role in nursing, then this is the qualification that can make that happen. Deepen your knowledge of the structure and complexities of nursing systems with a focus on innovative evidence-based practice which will enable you to lead improved nursing practice at all levels.

Structure:

6 Core Subjects, 2 Elective Subjects and 4 Sub-Major Subjects

Sample subjects

- Advanced Assessment and Diagnosis
- Pharmacological Therapies in Advanced Practice
- Advanced Clinical Practice

Management

Designed for nurses who are aspiring to management positions, as well as those already in a management role who wish to deepen their knowledge and expertise through formal study.

A mix of clinical and management subjects will see you develop the skills to effectively manage and plan resources in a health context. You will learn how to manage change in the workplace, promote an effective organisational culture, provide leadership to staff delivering quality care and better manage information and resources.

Structure:

6 Core Subjects, 2 Elective Subjects and 4 Sub-Major Subjects

Sample subjects

- Health Systems and Change
- Management for Clinicians
- Nursing Leadership in Contemporary Health Care

Primary Health Care

Designed for those working in, or looking to move into primary health care (PHC) who want to enhance their knowledge and skills, as well as those seeking a career change into PHC practice or management.

Develop your skills in equity-based planning and managing, with a contemporary, industry-relevant education in PHC that promotes improved coordination of continuity of care for patients. This major prepares you to adapt and work effectively in the front line of health care, regardless of the framework.

Structure:

6 Core Subjects, 2 Elective Subjects and 4 Sub-Major Subjects

Sample Subjects

- Health Promotion
- Principles of Primary Health Care
- Non-Communicable Disease

Chronic and Complex Care, Aging and Palliation

Designed to meet the growing need in all adult health care settings for nurses with expert knowledge in complex and chronic care as it relates to aging and palliation.

As our population ages, co-morbidities and complexity are increasing exponentially. Develop your expertise in assessment of complex cases and patient advocacy. Graduate with expert knowledge to improve and care for our increasingly complex ageing population.

Structure:

6 Core Subjects, 2 Elective Subjects and 4 Sub-Major Subjects

Sample subjects

- Non-Communicable Disease
- Palliative Care
- Caring For An Older Person

Health Research

Designed for nurses who want to pursue a career in research or who have an interest in investigating a specific topic related to their work.

This major prepares you for roles in academic or clinical research, as a CNC or in other leadership roles such as those in the Ministry of Health or other government departments. This major also provides a pathway for admission to a doctoral (PhD) program.

Structure:

4 Core Subjects, 4 Sub-Major Subjects and Complete a Dissertation

Sample subjects

- Research in Health
- Fundamentals of Epidemiology
- Dissertation in Health Research 1 & 2

No Major (Choose Elective Subjects)

Designed for those seeking a combination of subjects not offered through one of the majors. This course may also be suitable for people who are seeking a significant amount of credit recognition for prior postgraduate study.

As our most flexible option, you can mix and match from a large range of elective subjects to suit your individual needs.

Structure:

4 Core Subjects, 4 Elective Subjects and 4 Sub-Major Subjects

Sub-Majors (Choose 1)

- Acute Care Nursing
- Anaesthetics and Post Anaesthetic Care Unit Nursing
- Child and Family Health Nursing
- Clinical Management
- Clinical Teaching
- Critical Care Nursing
- Diabetes Education and Management
- Perioperative Nursing
- No Sub-Major (Choose Elective Subjects)

Sample Elective Subjects

- Core Concepts in Acute Care Nursing
- Leadership, Accountability and Role Development in Advanced Practice
- Pharmacological Therapies in Advanced Practice
- Complex Critical Care
- Applied Pathophysiology in Practice

Number of choices and availability depends on Major and Sub-Major selected.

Advanced Nursing Specialisations

Critical Care. Anaesthetics and Post Anaesthetic Care Unit. Perioperative.

UTS offers a range of specialist graduate certificates for **Registered Nurses**. As a first step in postgraduate education, they are designed to provide you with the opportunity to gain the knowledge, expertise and competencies for advanced practice in your nursing specialty area. The course of your choice will encourage you to build on your experience and think critically.

All Graduate Certificates in nursing articulate into other postgraduate nursing degrees. As a graduate, you will only need to complete four more subjects to receive a Graduate Diploma in Advanced Nursing or eight more subjects to receive a Master of Advanced Nursing.

Careers

Clinical Nurse Educator, Clinical Nurse Specialist, Clinical Nurse Consultant, Nurse Unit Manager.

Subjects

For full subject descriptions, visit handbook.uts.edu.au/courses/c11246

Admission requirements

- **Qualifications:** Bachelor's degree (or equivalent or higher qualification), or evidence of general and professional qualifications that demonstrates potential to pursue graduate studies.
- **Registration:** Hold current registration as a nurse in Australia.
- **Experience:** At least one year full time post-registration clinical experience. In some cases, applicants must have concurrent employment in the specific specialty clinical area of study. Suitability for enrolment will be determined by the course coordinator.



Suzy Ladanyi
Lecturer, Nursing
RN, BN, MN (Critical Care), GradCertHEd

“Managing and advocating for the optimal care of patients who are experiencing life-threatening conditions requires specialised knowledge and highly sought-after clinical expertise. This course draws on the philosophy of person-centred care, collaborative practice and excellence in communication within the uniquely complex and diverse situations in critical care, ICU or emergency settings.”

GRADUATE CERTIFICATE of Advanced Nursing (Critical Care)

C11246

Credit Points: 24

Structure: 2 Core Subjects and 2 Specialty Subjects

Intake: Autumn, Spring

Duration: 1 year part-time

Teaching Mode: Mix of online and on campus

Special entry requirements: concurrent employment in the specific specialty clinical area of study

Additional notes: This course is not offered to international students

Graduate ready to provide well-informed evidence-based expert nursing care, and function as a high-level clinician able to apply knowledge to practice while caring for critically ill patients within a health care setting.

Subjects:

- Fundamentals of Critical Care Nursing
- Applied Pathophysiology in Practice
- Complex Critical Care
- Specialty Clinical Practice (Or CAP)

uts.edu.au/course/c11246

GRADUATE CERTIFICATE of Advanced Nursing (Anaesthetics and Post Anaesthetic Care Unit)

C11246

Credit Points: 24

Structure: 2 Core Subjects and 2 Specialty Subjects

Intake: Autumn, Spring

Duration: 1 year part-time

Teaching Mode: Mix of online and on campus

Special entry requirements: concurrent employment in the specific specialty clinical area of study

Accreditation: ACORN, ACPAN

Additional notes: This course is not offered to international students

Designed for nurses who wish to function as expert anaesthetic and post anaesthesia recovery clinicians in the perioperative, day surgery and outpatient settings. Graduates will have developed specialised knowledge and highly sought-after skills to lead and advocate for optimal care of patients before, during and after surgery within a collaborative interdisciplinary team. Students will be provided with opportunities to progress their careers including into roles associated with leadership, research and teaching.

Subjects:

- Anaesthetic and Post Anaesthetic Care Unit (PACU) Nursing
- Core Concepts in Perioperative Nursing
- Applied Pathophysiology in Practice
- Specialty Clinical Practice (Or CAP)

uts.edu.au/course/c11246

GRADUATE CERTIFICATE of Advanced Nursing (Perioperative)

C11246

Credit Points: 24

Structure: 2 Core Subjects and 2 Specialty Subjects

Intake: Autumn, Spring

Duration: 1 year part-time

Teaching Mode: Mix of online and on campus

Special entry requirements: concurrent employment in the specific specialty clinical area of study

Accreditation: ACORN

Additional notes: This course is not offered to international students

Designed for nurses who wish to function as expert clinicians in the perioperative, day surgery and outpatient settings. Graduates will have developed specialised knowledge and highly sought-after skills to lead and advocate for optimal care of patients before, during and after surgery within a collaborative interdisciplinary team. Students will be provided with opportunities to progress their careers including into roles associated with leadership, research and teaching.

Subjects:

- Instrument and Circulating Nursing
- Core Concepts in Perioperative Nursing
- Applied Pathophysiology in Practice
- Specialty Clinical Practice (Or CAP)

uts.edu.au/course/c11246



Judy Smith
Lecturer, Nursing
RN, BN, MClInN (Clinical Nursing and Teaching), GradCertPeriop

“Perioperative nursing is a fast paced dynamic specialty unlike any other. Working both autonomously and as part of a multidisciplinary and collaborative team, perioperative nurses have the opportunity to work with state of the art equipment whilst caring for their patients when they are at their most vulnerable, advocating and protecting them at all stages throughout their perioperative journey.”



- Anaesthetics and Post Anaesthetic Care Unit
- Perioperative



- Anaesthetics and Post Anaesthetic Care Unit*

*ACPAN members receive a 5% discount on tuition fees when studying the Graduate Certificate of Advanced Nursing (Anaesthetics and Post Anaesthetic Care Unit).

Child and Family Health Nursing



Child and family health nurses work in partnership with parents as they learn the skills of parenting and caring for the infant and growing child. The primary health care role of the child and family health nurse includes child health assessment of physical growth and brain development, supporting wellbeing of the family through anticipatory guidance and health promotion, group work and counselling.

This course is designed for **Registered Nurses beginning practice in the clinical nursing specialty of child and family health**. It is offered in partnership with Tresillian Family Care Centres.

GRADUATE CERTIFICATE in Child and Family Health Nursing

C11200

Credit Points: 24

Structure: 4 Core Subjects

Intake: Autumn

Duration: 1-2 years part-time

Teaching Mode: Mix of online and on campus

Practice: Up to 120 hours in a child and family health service clinical facility

Prize: The Tresillian Family Care Centres Child & Family Health Nursing Prize for Academic Excellence, with a cash component of \$500, is awarded annually to the student who achieves the highest average mark in this degree

Additional notes: This course is not offered to international students

uts.edu.au/course/c11200



Joanne Sunners

Lecturer, Nursing

RN, GradCertMothercraft,

DipAppSc, MMid

"Our specialist course builds on your nursing knowledge and skills to enable you to work in primary health care settings with infants, young children and their families. The focus is on the first 2000 days of a child's life, inclusive of child health, growth and developmental surveillance and the promotion of maternal, child and family wellbeing all of which is supported by the embedded clinical experience program."

Careers

Child and Family Health Nurse in primary health care services, such as child and family health or community health centres, secondary level services in family care centres or breastfeeding clinics for mothers and babies, and tertiary services such as those offered by Tresillian or Karitane.

Subjects

- Principles of Child and Family Health Nursing
- Child and Family Health Nursing 1
- Child and Family Health Nursing 2
- Family and Community Health Practice

For full subject descriptions, visit

handbook.uts.edu.au/courses/c11200

Entry requirements

- **Qualifications:** Bachelor's degree (or equivalent or higher qualification), or evidence of general and professional qualifications that demonstrates potential to pursue graduate studies.
- **Registration:** Hold current registration as a nurse in Australia.

Nurse Practitioner

Stepping into the Nurse Practitioner role requires expert clinical knowledge, critical decision-making skills and strong leadership. This course is designed for **Registered Nurses who have extensive experience in a specialty area**, and who are looking to expand this knowledge and become experts in their field. With a valuable mix of theory, research and practice, the blended delivery of this course includes face-to-face teaching, integrated online learning, clinical simulation, and supported clinical practice. Guest presenters include industry-based Nurse Practitioners and experts from a range of clinical settings to ensure that knowledge and skills are evidence-based, and reflect advanced nursing as it is practised today.

MASTER of Nurse Practitioner

C04318

Credit Points: 72

Structure: 12 Core Subjects

Intake: Autumn, Spring

Duration: 3 years part-time

Teaching Mode: Mix of online and on campus

Practice: 300+ hours supervised practice in your area of specialisation

Additional notes: This course is not offered to international students

uts.edu.au/course/c04318



Rochelle Firth
Lecturer, Nursing
RN, MN, Nurse Practitioner

“The Nurse Practitioner role provides an opportunity for clinicians to deliver expert care where it is required. The framework allows collaboration with interdisciplinary teams to provide comprehensive and holistic models of care. This course allows expert nurses to stay clinically focused and develop a clinical career pathway. It expands your capabilities and your capacity to be able to provide care to patients more thoroughly.”

Accreditation

Complete this course and you will meet the Australian Health Practitioner Regulation Agency standards for practice for the Nurse Practitioner, and therefore, be eligible to apply for endorsement.

Careers

Nurse Practitioners provide care in a variety of areas such as acute services (e.g. emergency, critical care, surgical and medical specialties), community-based care (e.g. mental health, women’s health), palliative care, aged care, chronic disease management and primary health care.

Sample subjects

- Leadership, Accountability and Role Development in Advanced Practice
- Advanced Assessment And Diagnosis
- Pharmacological Therapies In Advanced Practice
- Research For Nurse Practitioners
- Quality Use Of Medicines In Advanced Practice
- Integrated Professional Practice 1 & 2
- Indigenous Public Health

For full subject descriptions, visit handbook.uts.edu.au/courses/c04318

Entry requirements

- Hold current general registration as a registered nurse in Australia.
- Have attained a postgraduate qualification in nursing at Australian Qualification Framework Level 8.
- Have a minimum of two years’ full time equivalent (FTE) as a registered nurse in a specified clinical field and two years FTE of current advanced nursing practice in this same clinical field.
- Have concurrent employment in, or access to, the chosen clinical area of study.
- Provide evidence of confirmed support to complete all professional experience requirements of the course, including integrated professional practice and supervision.
- Provide evidence of active involvement in professional organisations and contribution to the ongoing development of the profession.
- Meet English language proficiency and communication skill requirements to undertake integrated professional practice throughout the program.

Recognition of prior learning

Already completed an Advanced Nursing degree at UTS? Alumni may be eligible to fast-track this degree with credit recognition granted for prior study.

Articulation

Transfer from this course to the Graduate Certificate, Graduate Diploma or Master of Advanced Nursing if your circumstances change.

Midwifery

As experts in pregnancy, labour, birth and post-partum care, midwives work with women and families at a pivotal moment in their lives. Trained Midwives are always in demand – a global shortage means qualified midwifery professionals are highly sought after around the world. Our specialist degree for Registered Nurses produces skilled and responsive graduates with the capacity to deliver informed, reflective and compassionate midwifery care.



Join us at the top

We're leading the way when it comes to midwifery education – UTS is ranked 10th in the world and we're #1 in Australia for Nursing and Midwifery*, based on our academic expertise, employability of graduates, and research impact.



Expert staff

Learn from experienced and internationally renowned midwives committed to supporting and educating students in the profession. Our course academics have extensive experience in clinical, education, policy or research roles and remain engaged professionally, ensuring your theoretical learning reflects the realities of contemporary midwifery practice.



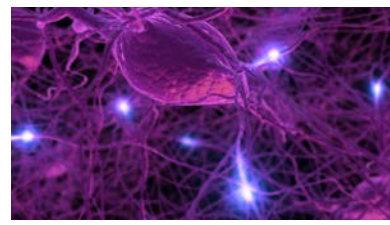
State-of-the-art facilities in the heart of Sydney

Our teaching facilities and clinical practice labs have been built to mimic real-world clinical environments and emphasise hands-on practice. Test your skills during in-class clinical simulations and learn in purpose-built classrooms whenever you're on campus.



Research integrated

All our course content is underpinned by the latest in midwifery research – and a lot of that research comes straight from UTS. That means your learning will respond to the changing nature of the health care landscape, and it'll also be embedded with the sort of evidence-based outcomes that are shaping the sector today.



* QS World University Rankings by Subject 2017-2019.

Midwifery

This course is designed for **Registered Nurses who want to become a Registered Midwife.**

GRADUATE DIPLOMA in Midwifery

C07070

Credit Points: 48

Structure: 8 Core Subjects

Intake: Autumn

Duration: 14 months

Teaching Mode:

- In class one day per week
- Six day workshop class in February 2020
- In paid employment four days per week for twelve months

Additional notes: This course is not offered to international students

The Graduate Diploma in Midwifery teaches you broad theoretical knowledge of professional, socio-political, ethico-legal issues and research skills that enhance midwifery practice and interpersonal processes.

uts.edu.au/course/c07070



Vanessa Scarf
Lecturer, Midwifery
RN, RM, Grad Cert Clin Epi
Member, Australian College of Midwives

“The Graduate Diploma in Midwifery is a popular course that leads to registration as a midwife in Australia. The course uses a blended approach to learning. Students enjoy the pre-class activities together with learning new skills and knowledge on campus one day a week. The concurrent employment provides students with the opportunity to work alongside midwives working in continuity of care models, providing care to women and their families throughout pregnancy, birth and the early parenting period. The continuity of care experiences together with other clinical learning opportunities provide high student satisfaction with the course.”

The course provides graduates with the following attributes: woman-centred care, professional competence, collaboration, resilience, diversity, professional engagement and Indigenous cultural respect. These attributes lead graduates to find employment in midwifery positions that offer scope for career satisfaction and advancement.”

Accreditation

Graduate eligible for registration as a midwife with the Australian Health Practitioner Regulation Agency.

Careers

Registered Midwife in hospital, community, public and private settings in metropolitan and rural areas; Career progression opportunities into midwifery education management, research, consultancy roles (e.g. lactation consultant, midwifery consultant), midwifery unit manager.

Subjects

- Midwifery Practice
- Midwifery as a Public Health Strategy
- Translating Research into Midwifery Practice
- Perinatal Mental Health
- Aboriginal and Torres Strait Islander Health: Women and Babies
- Midwifery Practice
- Midwifery in Complex Situations
- Power, Politics and Midwifery

For full subject descriptions, visit handbook.uts.edu.au/courses/c07070

Entry requirements

- **Qualifications:** Bachelor's degree (or equivalent or higher qualification), or evidence of general and professional qualifications that demonstrates potential to pursue graduate studies.
- **Registration:** Hold current registration as a nurse in Australia.
- **Concurrent employment:** Applicants are required to secure employment as a midwifery student in an accredited midwifery unit. This can be done through the NSW Ministry of Health, Nursing and Midwifery Office using the MidSTART process, or by applying directly to NSW private hospitals or maternity providers.



Ellen Brown
Graduate Diploma in Midwifery

“I chose to study at UTS because I wanted to experience a metropolitan university. I wanted to be part of a bigger institution that has an excellent reputation... I felt that the learning was deeply integrated with practical experience – I would learn something one day and then the next day, I would be practising it.

As a midwife, you work with women to help them discover how strong they are as they withstand all the changes in their body and environment. Because you work so closely with them, their successes become your successes. I still remember the first solo birth catch that I did, and even now, I am still struck by the same feeling of empowerment and trust. It never stops being an experience.”

Palliative Care

Palliative care is everyone's business. The population is ageing, resulting in an increasing level of progressive and life-limiting illnesses. More and more people are approaching the end of life without access to responsive, patient-centred palliative care. Our degrees respond to unmet workforce needs by equipping accomplished health professionals across a range of disciplines with clinically relevant skills in palliative care.

Interdisciplinary

Whether you are a medical, nursing or allied health professional, our degrees have been developed by world-leading palliative care educators and researchers, with input from consumers and in partnership with industry, to help you build the skills and leadership capabilities to deliver responsive, patient-centred palliative care in a range of clinical settings.



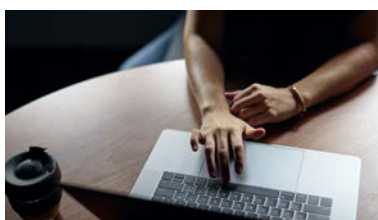
Expert staff

Be taught by leading clinical academic palliative care researchers who continue to improve practice and inform policy globally. Benefit from guest presenters who are industry-based practitioners and other experts from a range of clinical settings to ensure that knowledge and skills are evidence-based and reflect current advanced practice.



Flexible online study

Learn online, knowing that you'll be supported by UTS academics and your classmates during scheduled online learning activities. Learn using a range of teaching methods, such as participatory online and real-time learning activities, communities of practice, media resources, podcasts and case-based scenarios. Benefit from optional face-to-face master classes located on campus that foster interdisciplinary group learning, collaboration and networking opportunities.



Bespoke curriculum

Bespoke courses mean you'll advance your palliative care knowledge, skills and practice from your existing level, no matter the discipline or how advanced you are in the field. Mix and match subjects to create a program that's right for you. Our nested courses allow easy progression from a Graduate Certificate to a Graduate Diploma to a Master's. Depending on your prior education, including Clinical Accreditation Programs, you might be eligible to receive credit towards your degree.



Palliative Care

A postgraduate palliative care degree will prepare you to deliver holistic, interdisciplinary, person-centred care. Our courses are designed for **registered health professionals across all health settings** with clinical, policy or educational health experience who are looking to extend their palliative care capabilities to become future palliative care experts in their field. Rather than framing palliative as a clinical specialty, these courses are all about embedding palliative principles across a wide range of health care roles. In fact, we believe that the study of palliative care should encompass more than just making patients comfortable as they approach the end of their lives. Instead, it should respond effectively to the physical, psychological and psychosocial needs of people with life-limiting illnesses, and their families.

Palliative Care offers an articulated program. The degrees share subjects, allowing credit recognition for previously completed coursework.



Associate Professor Louise Hickman
Associate Professor, Palliative Care
RN, MPH, PhD

"Our suite of palliative care courses aim to meet future needs in palliative care, and to produce health care professionals with the capacity to drive reforms that will improve the experience for palliative patients and their families."

Graduates will be flexible, dynamic and able to work in what is sometimes a challenging health environment. Students will graduate with an integrated understanding of their role within palliative care as an interdisciplinary person-centred area of health, which will enable them to work effectively across a wide range of clinical, policy and educational environments."

MASTER of Palliative Care

C04365

Credit Points: 72

Structure: 9 Core Subjects and 3 Elective Subjects (or 9 Core Subjects, 2 Elective Subjects and 1 Internship)

Intake: Autumn, Spring

Duration: 1.5 years full-time or equivalent part-time

Teaching Mode: Online, with option to attend intensive face-to-face learning sessions at various points during the course

Additional notes: This course is not offered to international students

uts.edu.au/course/c04365

GRADUATE DIPLOMA in Palliative Care

C07131

Credit Points: 48

Structure: 6 Core Subjects and 2 Elective Subjects

Intake: Autumn, Spring

Duration: 1 year full-time or equivalent part-time

Teaching Mode: Online, with option to attend intensive face-to-face learning sessions at various points during the course

Additional notes: This course is not offered to international students

uts.edu.au/course/c07131

GRADUATE CERTIFICATE in Palliative Care

C11268

Credit Points: 24

Structure: 3 Core Subjects and 1 Elective Subject

Intake: Autumn, Spring

Duration: 1 year part-time

Teaching Mode: Online, with option to attend intensive face-to-face learning sessions at various points during the course

Additional notes: This course is not offered to international students

uts.edu.au/course/c11268

Careers

Leadership roles; Policymakers; Roles in clinical areas such as emergency, critical care, surgical and medical, community-based care, mental health, specialist palliative care, paediatrics, aged care, chronic disease management, primary health care.

Sample subjects

- Communicating and Collaborating for Optimal Person Centred Care
- Ethical, Legal and Moral Dilemmas of Palliative Care
- Generating Evidence to Improve Palliative Care Outcomes
- Clinical Assessment and Pharmacology in Palliative Care
- Palliative Care Internship

For full subject descriptions, visit handbook.uts.edu.au/courses/c04365

Entry requirements

- **Qualifications:** Bachelor's degree (or equivalent or higher qualification), or evidence of general and professional qualifications that demonstrates potential to pursue graduate studies.
- **Registration:** Hold current registration as a health professional in Australia.



One-of-a-kind

What sets UTS palliative care degrees apart is that they've been created as truly interdisciplinary qualifications. We connect registered health professionals from a range of backgrounds - think nurses, medical practitioners, policymakers and administrators - who each bring their own experiences and learning needs to the table and with whom you'll engage with in an online community.

As a health professional, it's likely you'll be called on to engage with patients approaching the end of their lives at some point in your career. Our courses are all about equipping you - and the wider health care workforce - with the capacity to deliver leadership in palliative care that supports patients and their families. You'll graduate with in-demand skills and advanced knowledge in person-centred care, communication, inter-professional collaboration, leadership, professional excellence and Indigenous proficiency.



Public Health

Disease prevention, health promotion and the reduction of health inequities across populations sit at the heart of effective public health practice – and at the heart of our degrees. Our courses prepare you to drive real change within the health sector, and give you the skills and expertise you need to prepare for leadership roles in this field.



Evidence-based thinking

We integrate the latest research and findings to deliver relevant course content that enables you to tackle existing and emerging public health challenges in the current landscape. Course content is practical and evidence-based, using current real-world examples, so you can translate your learnings into practice immediately.



Expert staff

Learn from passionate internationally recognised public health experts who continue to impact and inform policy. Our diverse range of specialists teach you transdisciplinary evidence-based responses to improving the health of communities through education, policymaking and research.



Flexible online or on-campus study

Learn online or combine online learning with intensive study days on campus. Our learning model integrates the best mix of online and intensive study days with master classes in a convenient location to ensure your valuable time is well spent.



Personalised learning

Lead, protect and promote the health of the world's population. Our broad degrees offer a wide range of electives to enable in-depth study in your area of professional interest.



Public Health

Our postgraduate public health courses are open to **graduates seeking a career** in public or global health, research or practice. We will focus on building your planning, implementation and evaluation skills – so that you are adaptable, responsive, and ready for just about anything the health sector can throw at you.

Public Health offers an articulated program. The degrees share subjects, allowing credit recognition for previously completed coursework.



Dr Daniel Demant
Lecturer, Public Health
BA (AppSocSc), MPH, PhD

“The field of public health is ever evolving. Our flexible and adaptive courses help you to develop specialist knowledge across public health care, prevention and promotion, to ensure you graduate ready to lead and transform the lives of others.”

MASTER of Public Health (Advanced)

C04303

Credit Points: 96

Structure: 48cp Core Subjects and 48cp Elective Subjects

Intake: Autumn, Spring

Duration: 2 years full-time or part-time equivalent

Teaching Mode: Subjects are offered mixed (online and on-campus) or fully online

uts.edu.au/course/c04303

MASTER of Public Health

C04302

Credit Points: 72

Structure: 36cp Core Subjects and 36cp Elective Subjects

Intake: Autumn, Spring

Duration: 1.5 years full-time or part-time equivalent

Teaching Mode: Subjects are offered mixed (online and on-campus) or fully online

uts.edu.au/course/c04302

GRADUATE DIPLOMA in Public Health

C07126

Credit Points: 48

Structure: 30cp Core Subjects and 18cp Elective Subjects

Intake: Autumn, Spring

Duration: 1 year full-time or part-time equivalent

Teaching Mode: Subjects are offered mixed (online and on-campus) or fully online

uts.edu.au/course/c07126

GRADUATE CERTIFICATE in Public Health

C11250

Credit Points: 24

Structure: 18cp Core Subjects and 6cp Elective Subjects

Intake: Autumn, Spring

Duration: 1 year part-time

Teaching Mode: Subjects are offered mixed (online and on-campus) or fully online

Additional notes: This course is not offered to international students

uts.edu.au/course/c11250

Careers

Roles in environmental health, epidemiology, health education, health policy, health promotion, public health, global health; Roles in government, private sector and not-for-profit organisations; Research.

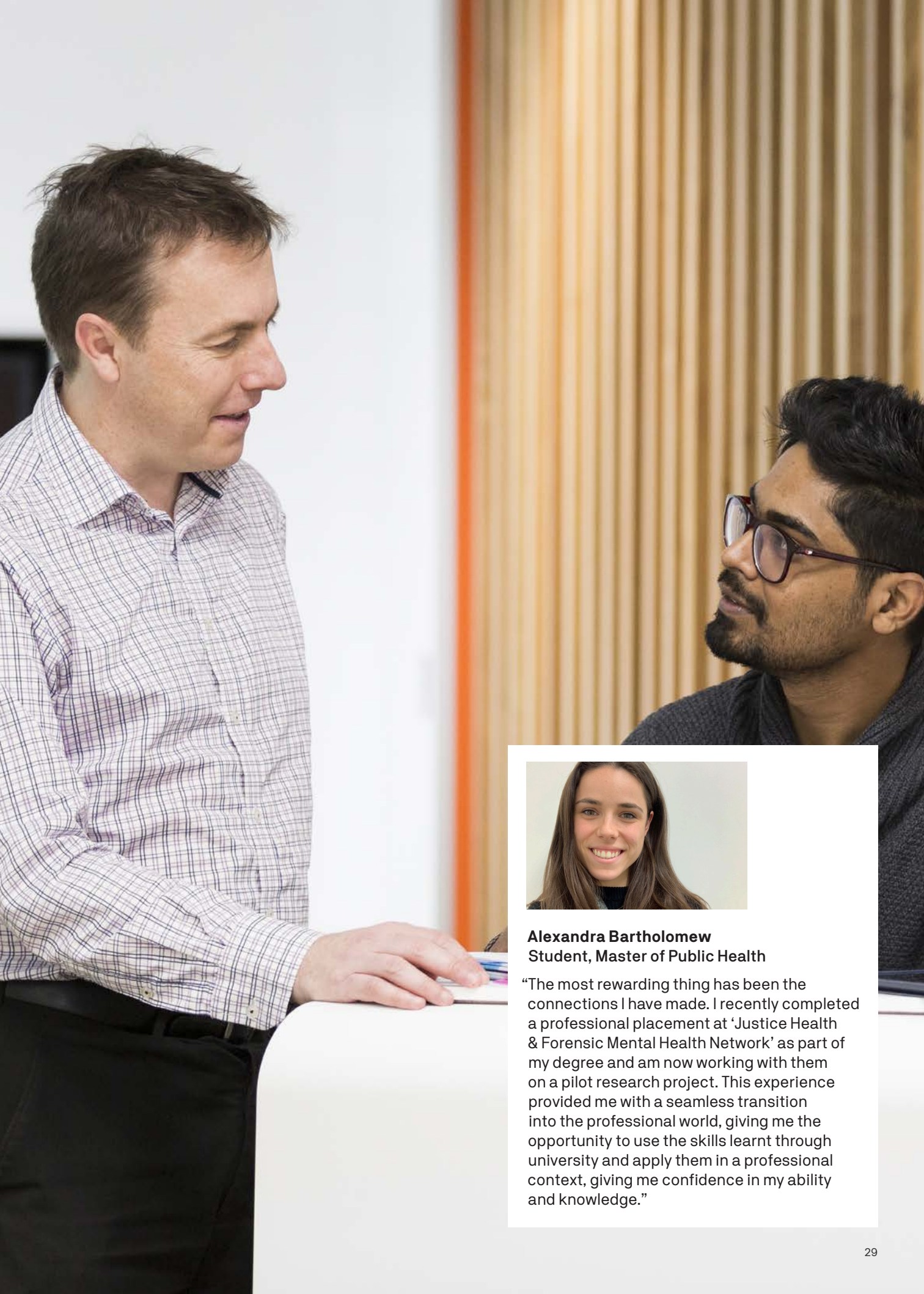
Sample subjects

- Communicable Diseases
- Foundations of the Australian Healthcare System
- Advanced Epidemiology
- Principles of Primary Health Care
- Professional Placement in Health Services Management and Public Health

For full subject descriptions, visit handbook.uts.edu.au/courses/c04302

Entry requirements

- **Qualifications:** Bachelor's degree (or equivalent or higher qualification), or evidence of general and professional qualifications that demonstrates potential to pursue graduate studies.



Alexandra Bartholomew
Student, Master of Public Health

“The most rewarding thing has been the connections I have made. I recently completed a professional placement at ‘Justice Health & Forensic Mental Health Network’ as part of my degree and am now working with them on a pilot research project. This experience provided me with a seamless transition into the professional world, giving me the opportunity to use the skills learnt through university and apply them in a professional context, giving me confidence in my ability and knowledge.”



Diabetes Education and Management

Diabetes Educators work as part of a multidisciplinary team to assist and care for people with diabetes or at high risk, and their families, to educate and provide them with strategies to self-manage their illness and prevent complications. If you're a health professional, studying diabetes education and management at a postgraduate level will provide you with the knowledge and skills to provide care in a variety of settings.

Diabetes Education and Management

GRADUATE CERTIFICATE in Diabetes Education and Management

C11115

Credit Points: 24

Structure: 4 Core Subjects

Intake: Autumn

Duration: 1 year part-time

Location: Sydney (Block) – UTS City Campus, or Brisbane (Distance) – UQ St Lucia campus

Teaching Mode: Mix of online and on campus

Practice: 40 hours in a diabetes service

Additional notes: This course is not offered to international students

This course covers the anatomy, physiology and pathology of the disease, exploring the specific tools and skills required to assist clients in the self-care management of diabetes.

uts.edu.au/course/c11115

This course is designed for **health professionals who would like to build on their existing health and clinical skills and experience** to develop in-depth knowledge and skills specific to diabetes education and management.

Master the importance of the management of diabetes in the prevention of complications, and of a multidisciplinary team involvement in the care of diabetes. With an emphasis on adult learning principles, course content explores theories of health behaviour and the implications these have for practice, plus the philosophy of primary health care principles and their application in contemporary health systems. You will develop knowledge of the systems in place to prevent and manage diabetes within the community – as well as the self-management model of care, which can be applied to prevent and manage a chronic disease.



Shannon Lin
Lecturer, Diabetes Education and Management
M Nutri Mgt, BS Hons (Nutri & Diet),
Grad Cert in Diabetes Edu & Mgt

“With the increasing prevalence of diabetes in Australia, there is a growing need for diabetes educators to help curb the diabetes epidemic.”



Bronwyn Guy
Registered Nurse
Student, Graduate Certificate in Diabetes Education and Management

“While I enjoy General Practice, I wanted to specialise in type 2 diabetes, particularly disease prevention. As someone who is passionate about the role of health and fitness in maintaining a great quality of life, I want to educate and assist people to optimise their health through healthy lifestyle choices.”

Accreditation

Professionals in certain disciplines are eligible to apply for the Credentialed Diabetes Educator status from the Australian Diabetes Educators Association.

Careers

Diabetes educators and managers in a variety of settings such as universities, pharmaceutical industries, diabetes organisations, hospitals and private clinics.

Subjects

- Clinical Management in Diabetes
- Health Education and Health Promotion
- Primary Health Care in Diabetes
- Clinical Practice in Diabetes

For full subject descriptions, visit handbook.uts.edu.au/courses/c11115

Entry requirements

- **Qualifications:** Bachelor’s degree (or equivalent or higher qualification), or evidence of general and professional qualifications that demonstrates potential to pursue graduate studies. Previous qualifications must be in a health-related field such as nursing, allied health or medicine.
- **Registration:** current registration in Australia for one of the following: Nurse (RN or Division 1), Midwife, Accredited Practising Dietitian, Medical Practitioner, Pharmacist, Dietitian, Podiatrist, Accredited Exercise Physiologist, Physiotherapist, Psychologist, Aboriginal Health Practitioner.
- **Experience:** at least one year full-time employment in your health-related discipline, with some experiences in diabetes related care and management.

Articulation

Registered Nurses can complete 4 further subjects to receive a Graduate Diploma or 8 further subjects to receive a Master of Advanced Nursing.



Health Services Management

We're leading the way in health services management education and research. When you study with us, you will be studying a degree that's been developed in partnership with key stakeholders in health and social care, which goes beyond general management skills to include clinical components and a specialised health focus.

Applicable evidence-based theory

Our programs are innovative and informed by the latest research into the delivery of health services and industry demands. With academics embedded in the UTS Centre for Health Services Management, examine real-world challenges related to consumer engagement, digital health, demographics, health information management, leadership and management, quality and safety improvement, delivery of care to vulnerable groups, and workforce and service planning.



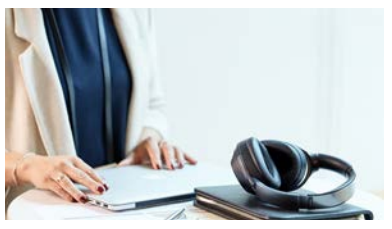
Expert staff

Join a vibrant interdisciplinary learning community, with experienced educators from a range of disciplines and backgrounds including medical sociology, nursing, midwifery, public health, community medicine, digital health and health informatics. Our industry experts will help you develop the skills and knowledge you need as a leader in this uniquely challenging field.



Flexible online and face-to-face study

Our unique approach to learning integrates the best mix of online and intensive study days with master classes in a convenient location to ensure your valuable time is well spent.



Specialised health focus

Focus your study on an area that's right for you. Develop expertise in Health Services Management, Planning, Clinical Leadership, Project Management, Health Information Management, Health Research, or Health Law, Ethics and Governance.



Industry connections

The Faculty of Health has strong collaborative relationships with health and social care services, as well as professional bodies and community groups. Health Services Management courses have close and ongoing relationships to industry bodies including:

- Australasian College of Health Services Management
- Health Information Management Association of Australasia
- Australian College of Nursing
- Australian Commission on Safety and Quality in Health Care
- Clinical Excellence Commission

Health Services Management

Join the next generation of managers and leaders with a qualification in health services management. Our courses are for **experienced or aspiring health service managers** looking to enhance skills, gain expertise, or formalise workplace learning with a tertiary qualification.

Courses in this area tackle broad health services management and leadership topics. Dive into the study of value-based service delivery, organisational and service design, performance measures and management, quality and safety improvement strategies, consumer engagement, and accountability in health care delivery. Subjects are aligned with industry needs and demands with a range of activities including client briefs, case studies and simulations. This means you will be able to apply what you learn, as you learn it – or, if you are an experienced health manager, to add value to what you already do.



Dr Deborah Debono
Senior Lecturer
Health Services Management
RN, BA (Psych Hons), PhD

“UTS continues to be a leading authority on health management and informatics. With a curriculum that acclimates to an ever-evolving environment, our courses create a clear pathway for health professionals to develop their careers.”

MASTER of Health Services Management

C04140

Credit Points: 72

Structure: Various (see page 35)

Intake: Autumn, Spring

Duration: 1.5 years full-time or part-time equivalent

Teaching Mode: Mix of online and on campus

Designed for aspiring or mid-level health service managers. Learn core health services management topics with no major, or choose to specialise with a major in Clinical leadership, Health law, ethics and governance, Health research, Planning or Project management.

uts.edu.au/course/c04140

GRADUATE DIPLOMA in Health Services Management

C07048

Credit Points: 48

Structure: 6 Core Subjects and 2 Elective Subjects

Intake: Autumn, Spring

Duration: 1 year full-time or part-time equivalent

Teaching Mode: Mix of online and on campus

This intermediate level course will enhance your capacity to manage health services and expand your knowledge and future career opportunities.

uts.edu.au/course/c07048

GRADUATE CERTIFICATE in Health Services Management

C11107

Credit Points: 24

Structure: 2 Core Subjects and 2 Elective Subjects

Intake: Autumn, Spring

Duration: 1 year part-time

Teaching Mode: Mix of online and on campus

Additional notes: This course is not offered to international students

This course is designed to ease you into postgraduate learning as an introduction to health services management.

uts.edu.au/course/c11107

Careers

Managers and/or planners in health authorities, hospitals, primary and community care, aged care services, and other healthcare facilities in the public, private, not-for-profit, government and non-government health sectors.

Core Subjects

- Foundations of the Australian Health Care System
- Using Health Care Data for Decision Making
- Organisational Management in Health Care
- Policy, Power and Politics in Health Care
- Managing Quality, Risk and Cost in Health Care
- Fundamentals of Epidemiology

For full subject descriptions, visit handbook.uts.edu.au/courses/c04140

Entry requirements

- **Qualifications:** Bachelor’s degree (or equivalent or higher qualification), or evidence of general and professional qualifications that demonstrates potential to pursue graduate studies. This evidence may include extensive relevant work experience in a healthcare or human services field.
- **Experience:** At least one year’s full-time equivalent experience in a healthcare or human services organisation.



Brooke Selby
Project Officer
Student, Master of Health Services Management in Project Management

“Many of the assignments are based on existing challenges faced by the Australian healthcare system. It has been really rewarding working with students from a variety of professional and cultural backgrounds to develop solutions to these challenges.”

Master of Health Services Management: Course program

WHAT WILL YOU STUDY?

Majors (Choose 1)

Clinical Leadership

Designed for future directors and/or portfolio managers within a health service, particularly in the area of clinical governance. This major encompasses organisational and people management, governance and risk management, safety and quality imperatives. It focuses on improving patient and organisational outcomes through minimising risk and implementing processes that increase efficiency and effectiveness, especially around human factors and information management.

Structure:

6 Core Subjects, 4 Major Subjects and 2 Elective Subjects

Major subjects

- Management for Clinicians
- Improving Quality and Safety in Health Care
- Health Systems and Change
- Planning and Evaluating Health Services

Health Law, Ethics and Governance

Designed for middle to senior health services managers and future clinical leaders looking to set themselves apart with legal knowledge, dispute resolution and negotiation skills in the healthcare context. This is a practical and practice-oriented major, where you will develop knowledge of health law and contemporary business law, while developing advanced skills in dispute resolution and negotiation.

Structure:

6 Core Subjects, 4 Major Subjects and 2 Elective Subjects

Major subjects

- Negotiation
- Law and Medicine
- Dispute Resolution
- Contemporary Business Law

Health Research

Designed for those looking to undertake health services research to investigate a specific area of interest. Immerse yourself in a blend of health services management, research coursework and independent study subjects to equip you with the skills to undertake health services research. This major also provides a pathway for admission to a doctoral (PhD) program.

Structure:

6 Core Subjects, 4 Major Subjects and 2 Elective Subjects

Major subjects

- Evidence-based Practice
- Research in Health
- Dissertation in Health Research 1 & 2

Planning

Designed for experienced planners looking to sharpen their skills or obtain a formal qualification, recently appointed planners wanting to gain in-depth knowledge, or those who are interested in pursuing a career in this area. Graduate with the skills to conduct needs analysis, develop goals and strategies, select appropriate interventions, and manage change in highly complex and robust environments.

Structure:

6 Core Subjects, 4 Major Subjects and 2 Elective Subjects

Major subjects

- Planning and Evaluating Health Services
- Advanced Health Services Planning
- Health Systems and Change
- Introductory Health Economics

Project Management

Designed for current or aspiring project officers and program managers in health. This major takes into account international project management trends. Learn to deliver projects of differing types and sizes across all industry sectors with practice-based knowledge, skills and the necessary tools. Subjects emulate real project environments, so you can directly develop your ability to manage projects in practice.

Structure:

6 Core Subjects, 4 Major Subjects and 2 Elective Subjects

Major subjects

- Project Scope, Time and Cost Management
- Project Risk, Procurement and Quality Management
- Project Communication, HR and Stakeholders
- Project Integration Management

No Major

Designed to teach the fundamentals of health services management. Meet the ever evolving needs of health and social care systems, and tailor your course with electives to suit your interests.

Structure:

10 Core Subjects and 2 Elective Subjects

Major subjects

- Health Systems and Change
- Planning and Evaluating Health Services
- Introductory Health Economics
- Management for Clinicians

Elective Subjects

Number of choices and availability depends on Major selected.

For full subject descriptions, visit handbook.uts.edu.au/courses/c04140

Advanced Health Services Management in Planning

MASTER of Advanced Health Services Management in Planning

C04246

Credit Points: 96

Structure: 14 Core Subjects and
2 Elective Subjects

Intake: Autumn

Duration: 2 years full-time or part-time
equivalent

Teaching Mode: Mix of online and
on campus

uts.edu.au/course/c04246

Join the next generation of managers and leaders with a Master of Advanced Health Services Management. This comprehensive degree for **experienced or aspiring health service managers** tackles broad health services management and leadership topics and allows you to specialise in a high demand area – planning.

This course provides an in-depth knowledge of both health services management and health planning. Core skills include planning and evaluation of health services, understanding health needs, and managing people, resources, systems and processes with a range of health services.

Course content will equip you to meet the complex and shifting dynamics of health systems and services, and assume senior planning and leadership roles in the strategic and operational management of a wide range of health facilities.

Adjunct Professor Kathy Meleady
Director, Commonwealth Programs,
Australian Commission on Safety
and Quality in Health Care,
NSW Health

"I believe it is crucial to invest in training a future workforce and UTS's Health Services Planning courses provide the theoretical, evidence-based basis for this, combined with practical input and understanding of contemporary health planning."

Careers

Health planning managers and generalist positions (e.g. Clinical and Practice Managers; Directors of Nursing; Nursing and Midwifery Unit Managers; Quality and Safety positions) within aged care services, health authorities, health insurance companies, hospitals, primary and/or community care, and other healthcare facilities in the public, private, not-for-profit, government and non-government health sectors; Private or corporate consultancy positions.

Sample subjects

- Planning and Evaluating Health Services
- Advanced Health Services Planning
- Using Health Care Data for Decision Making
- Introductory Health Economics
- Human Resource Management
- Project Management Principles

For full subject descriptions, visit
handbook.uts.edu.au/courses/c04246

Entry requirements

- **Qualifications:** Bachelor's degree (or equivalent or higher qualification), or evidence of general and professional qualifications that demonstrates potential to pursue graduate studies. This evidence may include extensive relevant work experience in a healthcare or human services field.
- **Experience:** At least one year's full-time equivalent experience in a healthcare or human services organisation.

Advanced Health Services Management in Health Information Management

MASTER of Advanced Health Services Management in Health Information Management

C04246

Credit Points: 96

Structure: 16 Core Subjects

Intake: Autumn

Duration: 2 years full-time or part-time equivalent

Teaching Mode: Mix of online and on campus

Practice: 1 Internship

uts.edu.au/course/c04246

Tackle complex and shifting dynamics of health systems and services with an advanced qualification for **experienced or aspiring health service managers** designed to upskill a new health information workforce.

Australian and international health facilities are increasingly digitised. This Health Information Management major meets a critical need for health information professionals in the contemporary digital health environment which demands a data-driven approach.

Careers

Health information managers, Clinical coders, Data analysts, Costing experts, Health informaticians.

Sample subjects

- Using Health Care Data for Decision Making
- Language of Healthcare
- Contemporary Approaches to Health Analytics
- Health Classification and Terminologies A and B
- Healthcare Financing
- Digital Health for Information Professionals
- Internship
- Professional Placement in Health Services Management and Public Health (elective)

For full subject descriptions, visit handbook.uts.edu.au/courses/c04246

Admission requirements

- **Qualifications:** Bachelor's degree (or equivalent or higher qualification), or evidence of general and professional qualifications that demonstrates potential to pursue graduate studies. This evidence may include extensive relevant work experience in a healthcare or human services field.
- **Experience:** At least one year's full-time equivalent experience in a healthcare or human services organisation.

Janelle Craig

Associate Lecturer, Health Services Management
MComm, BAppSci (MRA)

"Health data is now seen as a strategic resource for clinicians, managers and patients which drives the care process, quality and safety, and organisational and financial management. Health Information Managers have a diverse skill set that sees them uniquely placed to impact the evolution of digital health and informatics. By introducing this course, UTS is contributing to the future of the HIM profession."



High Performance Sport

High performance sport practitioners are the coaches, exercise scientists and performance managers tasked with keeping the global sporting elite in tip-top condition. Our new, flexible postgraduate degrees meet the need for professional qualifications within this constantly evolving field. Learn the real-world knowledge you need to get to the top of your game.



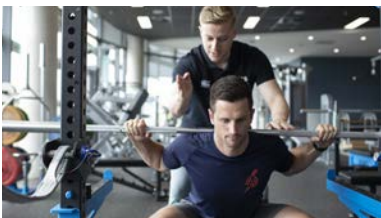
Expert-connected

Benefit from our industry connections in sport and exercise science, health and human performance. UTS is consistently considered NSW's most industry-focused university[^]. The academic leaders teaching into this program are based at our UTS Moore Park precinct, surrounded by elite athletes every day and doing real work to advance the high performance of the Sydney Swans, Wallabies, Wallaroos, Cricket NSW and more.



Practical and evidence-based

Our course content is developed in close consultation with industry partners and infused with the latest findings from our internationally recognised researchers. This means you'll be learning relevant content directly from the experts who are currently breaking new ground in the field.



Flexible online study with embedded practice

Learn online, supported by academics and engaging with your classmates through online channels. You'll also put your learning into practice with face-to-face intensive weeks at the end of session and industry-embedded internships – so you can apply knowledge, develop professionally and network with industry partners immediately.



Bespoke curriculum

Personalise your course, whether you're starting out in the field, or you have solid experience and want to advance or 'top up' in certain areas. Our nested courses allow easy progression from a Graduate Certificate to a Graduate Diploma to a Master's. Depending on your prior education and experience, you might be eligible to receive credit towards your degree.



[^]AMR RepTrak Survey 2017

High Performance Sport

NEW
Courses

Get set to lead, manage and inspire in the field of high performance sport. Postgraduate degrees in high performance sport are designed for **sport and exercise professionals currently in the field, and for students who have previously completed studies** within the sport and exercise domain. You will learn ways to enhance performance and reduce injury, and apply a detailed process of planning to deliver high-quality sports performance services and optimised health outcomes for elite athletes and coaches.

High Performance Sport offers an articulated program. The degrees share subjects, allowing credit recognition for previously completed coursework.



Dr Blake McLean
Senior Lecturer, Sport and
Exercise Science
PhD, ASpS2, AHPM, CSCS, ASCA

"Lifetime learning is critical in the High Performance field. Our courses are built by world-class researchers with extensive input from industry partners, and designed to foster excellent critical thinking skills, while ensuring you graduate ready to translate this technical expertise into practice."

MASTER of High Performance Sport

C04362

Credit Points: 72

Structure: 9 Core Subjects, 2 Internships and 1 Elective Subject (or 3rd Internship)

Intake: Autumn, Spring

Duration: 1.5 years full-time or equivalent part-time

Teaching Mode: Online with an intensive face-to-face week at end of session

Practice: 2-3 Internships

Designed for those seeking to work at an expert level in high performance sport, in a variety of settings.

uts.edu.au/course/c04362

GRADUATE DIPLOMA in High Performance Sport

C07130

Credit Points: 48

Structure: 6 Core Subjects, 1 Internship and 1 Elective Subject (or 2nd Internship)

Intake: Autumn, Spring

Duration: 1 year full-time or equivalent part-time

Teaching Mode: Online with an intensive face-to-face week at end of session

Practice: 1-2 Internships

Designed for those seeking to work at an advanced level in high performance sport, in a variety of settings.

uts.edu.au/course/c07130

GRADUATE CERTIFICATE in High Performance Sport

C11267

Credit Points: 24

Structure: 4 Elective Subjects (including an Internship option)

Intake: Autumn, Spring

Duration: 1 year part-time

Teaching Mode: Online with an intensive face-to-face week at end of session

Practice: 1 Internship (optional)

An introductory course designed for those seeking to work at an advanced level in high performance sport, in a variety of settings.

uts.edu.au/course/c11267

Accreditation

With the completion of three internships, students enrolled in the master's degree can attain the minimum 360 supervised hours of sports science professional experience required for individual Sport Science (ASpS L1) accreditation with Exercise and Sport Science Australia (ESSA).*

Careers

Practitioner roles (e.g. sport scientist, strength and conditioning coach, performance analyst, high-performance manager) in a variety of sport settings (e.g. professional sporting organisations,

national and international performance institutes, schools, university research institutions, government and non-government funded sporting programs).

Sample subjects

- High Performance Science
- Coaching Science
- Injury Prevention and Management in High Performance Sport
- Recovery and Nutrition for High Performance Sport
- Performance Analysis and Data Science

For full subject descriptions, visit handbook.uts.edu.au/courses/c04362

Entry requirements

- **Qualifications:** Bachelor's degree (or equivalent or higher qualification), or evidence of general and professional qualifications that demonstrates potential to pursue graduate studies.

*ASpS L1 applicants must also meet ESSA's remaining accreditation eligibility requirements.

An elite sporting hub in the heart of Sydney

Spend your intensive study weeks with UTS Sport and Exercise, based in the Rugby Australia Building at the **Moore Park precinct**. Our partnership with the Australian Government, Rugby Australia and the Sydney Cricket and Sports Ground Trust houses students, elite athletes, high-performance training facilities and sector-leading sport scientists.



Research

The Faculty of Health produces world-class research in Nursing, Midwifery, Health Services Management, Palliative Care, Public Health, Sport and Exercise Science and Complementary and Integrative Medicine.

Our research pushes the boundaries of what's possible. We believe strongly in collaborative, interdisciplinary research – research that shapes lives, improves practice and informs policy.

FACULTY RESEARCH CENTRES

Australian Centre for Public and Population Health Research

Australian Research Centre in Complementary and Integrative Medicine

Centre for Health Services Management

Centre for Midwifery, Child and Family Health

Human Performance Research Centre

Improving Palliative, Aged and Chronic Care through Clinical Research and Translation

MULTI-INSTITUTION RESEARCH COLLABORATIONS

World Health Organization (WHO) Collaborating Centre for Nursing, Midwifery and Health Development

5/5

(well above world standard) for nursing and midwifery, human movement and sports science*

4/5

(above world standard) for public health and health services, complementary and alternative medicine*

* Excellence in Research for Australia (ERA) 2018

Research degrees

Our strengths cover a wide range of research interests for students undertaking projects that focus on improving health outcomes in both local and global communities. Our growing cohort of higher degree research students are continuing to advance knowledge, develop researcher and student networks, and transform industry-driven research questions into solutions, guided by our motivated academics and practitioners. We foster innovation, collaboration and evaluation in partnership with industry organisations, academia and consumers to generate world-leading, high impact research.



DO YOU...

Have a bachelor's degree or extensive industry experience working in a related field (&)

Want to develop your research skills, & undertake original, independent research?



MASTER

Health Services (Research)

Course code: C03050

Midwifery (Research)

Course code: C03049

Nursing (Research)

Course code: C03048

Sport and Exercise (Research)

Course code: C03055

Have a master's (research) or bachelor's degree with first or second class honours with division 1? (&)

Want to undertake intensive supervised study & research, culminating in the submission of a thesis?



PHD

Doctor of Philosophy (Nursing, Midwifery, Health)

Course code: C02024

Doctor of Philosophy (Public Health)

Course code: C02061

Doctor of Philosophy (Sport and Exercise)

Course code: C02057

Master's Degree by Research

A Masters by Research is designed for people who want to pursue a research career or investigate an area of interest but do not have previous qualifications or experience in research. Applicants must have completed a UTS recognised Bachelor's Degree, or an equivalent or higher qualification, or submitted other evidence of general and professional achievements that demonstrates potential to pursue graduate research studies.

Selection Criteria

Selection criteria includes the quality of the research proposal and the faculty's ability to offer appropriate supervision in the applicant's chosen field. In addition, applicants for the Master of Nursing (Research) and Master of Midwifery (Research) are required to be registered in their area of practice.

PhD/Doctorate

The Doctor of Philosophy is a research degree requiring an original and significant contribution to knowledge in a defined field of study. This can be through the writing of a thesis and publications. Applicants must have completed a UTS recognised Master's Degree by Research or Bachelor's Degree with first or second class (division 1) honours, or equivalent or other academic qualifications that demonstrates capacity to pursue graduate research studies.

Research Supervision

Applicants are required to submit a research proposal and have the agreement of a suitable supervisor at the time of application. To view the list of supervisors and their areas of research visit uts.edu.au/research-and-teaching/future-researchers

CONTACT US

Faculty of Health Research Office
Research Administration Officer

Tel: 02 9514 4834

E: health.research.students@uts.edu.au

Choose your course

Health

– Graduate Certificate in Diabetes Education and Management

Commonwealth Supported Place: No
Supporting Documents: Evidence of current registration as a health professional, CV (which demonstrates employment in a health or health-related discipline and experience in a diabetes-related area)

Sessions: Autumn
Overall IELTS: 6.5

Health Services Management – Advanced Master of Health Services Management

Commonwealth Supported Place: No
Supporting Documents: Evidence of at least one year full-time (or part-time equivalent) experience in a medium to large organisation (health or human services organisations are preferred)

Sessions: Spring
Overall IELTS: 6.5

– Master of Health Services Management – Graduate Diploma in Health Services Management – Graduate Certificate in Health Services Management

Commonwealth Supported Place: No
Supporting Documents: Evidence of at least one year full-time (or part-time equivalent) experience in a medium to large organisation (health or human services organisations are preferred)

Sessions: Autumn, Spring
Overall IELTS: 6.5

Midwifery

– Graduate Diploma in Midwifery

Commonwealth Supported Place: Yes
Supporting Documents: Evidence of current nursing registration, evidence of concurrent employment in a midwifery student position

Sessions: Autumn
Overall IELTS: 6.5

Nursing

– Master of Nurse Practitioner

Commonwealth Supported Place: No
Supporting Documents: Evidence of:

- current nursing registration
- postgraduate qualification at AQF Level 8 in nursing
- minimum of two years full time equivalency (FTE) as a registered nurse in a specified clinical field and two years FTE of current advanced nursing practice in the same clinical field
- concurrent employment in, or access to the chosen/relevant clinical area of study

- confirmed support to complete all professional experience requirements of the course, including integrated professional practice and supervision
- active involvement in professional organisations and contribution to the ongoing development of the profession
- Master of Nurse Practitioner supporting documentation forms
- employer statement of support form

Sessions: Autumn, Spring
Overall IELTS: 6.5

– Master of Advanced Nursing – Graduate Diploma in Advanced Nursing – Graduate Certificate of Advanced Nursing

Commonwealth Supported Place: No
Supporting Documents: Evidence of current nursing registration, evidence of at least one year full time post-registration clinical experience, evidence of concurrent employment in the specific specialty clinical area of study (In some cases)

Sessions: Autumn, Spring
Overall IELTS: 6.5

– Graduate Certificate in Child and Family Health Nursing

Commonwealth Supported Place: No
Supporting Documents: evidence of current nursing registration, evidence of at least one year full time post-registration clinical experience

Sessions: Autumn
Overall IELTS: 6.5

Palliative Care

– Master of Palliative Care – Graduate Diploma in Palliative Care – Graduate Certificate in Palliative Care

Commonwealth Supported Place: No
Supporting Documents: Evidence of current registration as a health professional

Sessions: Autumn, Spring
Overall IELTS: 6.5

Public Health

– Master of Public Health (Advanced) – Master of Public Health – Graduate Diploma in Public Health – Graduate Certificate in Public Health

Commonwealth Supported Place: No
Supporting Documents: CV (applicants who do not have an undergraduate degree or equivalent)

Sessions: Autumn, Spring
Overall IELTS: 6.5

High Performance Sport

– Master of High Performance Sport – Graduate Diploma in High Performance Sport – Graduate Certificate in High Performance Sport

Commonwealth Supported Place: No
Supporting Documents: CV (applicants who do not have an undergraduate degree or equivalent)

Sessions: Autumn, Spring
Overall IELTS: 6.5

Research

Documents Required:

Research Proposal

Follow the 'Writing a Research Proposal' guide

Outline of intended research

2000 words and provide information in three principal areas of; background to the intended area of research, a case for its significance and importance and the connection to research of academics in the Faculty.

Current CV

Academic Transcripts from all post-secondary studies

Statement of completion for previous studies

Evidence of English Language Proficiency

English requirements vary depending on the degree you are applying for. If you're a native English speaker, or if you've studied at post-secondary level in English before, a certified transcript or proof that the course was taught in English is sufficient evidence to meet this criterion. Please check details of your English Language Requirements.

Academic Transcript for current degree (if currently studying)

Two academic referee reports

Health Supervision Agreement Form



Application journey

Before you apply

Check the following:

- Key application dates
- Course specific entry requirements
- Recognised Prior Learning
- English Language Proficiency

Local applicants: Coursework Entry requirements

UTS recognised bachelor's degree (or an equivalent or higher qualification), or evidence of general and professional qualifications that demonstrates potential to pursue graduate studies. This evidence may include extensive relevant work experience in a health or human services field.

Additional entry requirements vary from course to course. For detailed information visit health.uts.edu.au/future

How to apply

Submit your application for a postgraduate coursework degree online:

- through the UTS online application system at uts.edu.au/pg-admissions
- at one of our Postgraduate Expos or Information Sessions

Application Closing Dates

Autumn Session: 30 January 2020

Spring Session: 25 June 2020*

* Not all postgraduate courses have a mid-year intake. Visit our website or contact us for more details.

Offers

UTS will begin making postgraduate offers for 2020 from late September 2019.

Alumni Advantage

If you've already completed a degree at UTS then you are eligible for the Alumni Advantage program, which offers a 10% savings on full fee paying degree programs. Find out if you're eligible for Alumni Advantage at alumni.uts.edu.au/advantage



Local Applicants: Research

A postgraduate by research degree will see you undertake and complete a research project. Before you submit your application, you will need to consider what you want to research, write a research proposal and find a supervisor.

1. Choose your course
2. Find a supervisor
3. Find a scholarship
4. Prepare your documents
5. Lodge your application to the UTS Graduate Research School

Visit uts.ac/apply-for-research or email health.research.students@uts.edu.au to find out more about the research application process and apply.

International Applicants

Please note this guide is not intended for International students and not all courses are available to international students.

If you are an international student, head to uts.edu.au/international to find the course information, fees and application details relevant to you.

Fees

Fees can be found online at fees.uts.edu.au

If you're studying a postgraduate coursework degree, you will need to pay tuition fees. You can find out more about what your degree will cost at uts.edu.au/tuition-fee-calculator

For postgraduate research degrees, you will need to either pay a fee or, if you're eligible for the Research Training Program, the Australian Government will cover the cost for you. To find out more visit uts.edu.au/domestic-hd-fees

Defer your fees

If you do have to pay a fee and you're a local student, you may be eligible for FEE-HELP, an Australian Government loan scheme. Using FEE-HELP means you don't have to pay for your tuition fees up front. More information can be found at uts.edu.au/government-help-schemes

You can choose to repay your FEE-HELP loan simply by notifying your employer who will then withhold your payments through the PAYG tax system. You can also make payments directly to the Australian Taxation Office (ATO).

Scholarships

A range of scholarships are available to students who study with the Faculty of Health. Head to health.uts.edu.au/future

Non-Award Study

Do you want to study a single subject without committing to a full degree? You can! It's called Non-Award Study and it's a great way to upgrade your skills or just learn more about something you enjoy. What's even more exciting is that any subjects you complete may be recognised in future study. To apply, visit uts.ac/non-award-study

English Language Proficiency

There are English language proficiency requirements for all courses. If you have studied overseas you may need to demonstrate your English proficiency. Find out if this applies to you at uts.edu.au/english-language-requirements

Key information

The Academic Year

There are three teaching sessions at UTS:

Autumn Session: March to June

Spring Session: July to October

Summer Session: November to February*

Not all subjects offered by UTS are currently run during Summer session

Timetable Information

Do you like to plan ahead? The UTS Timetable Planner lets you see the timetable for the current session, so you can get an idea about when the subjects for your degree may be scheduled and offered. The 2020 timetable will be published in October 2019. Visit timetable.uts.edu.au

Info Sessions

Meet us face-to-face at a Postgraduate Info Session. Find out everything you need to know about upcoming information sessions at health.uts.edu.au/future

Contact us

UTS Student Centre Tel: **1300 ASK UTS**
Online enquiry: ask.uts.edu.au
For further information visit our website: health.uts.edu.au/future
handbook.uts.edu.au/health/pg

UTS Graduate Attributes

That little something extra

Theoretical expertise and practical skills are essential components of a health career. But at UTS, we offer a little something extra. All of our courses are underpinned by a series of graduate attributes that prepare you for the complexity and challenges of life beyond university. These attributes guide our teaching, learning and assessment practices, so they are at the heart of everything we do. Better yet, we have worked closely with our industry partners to develop these attributes, so we know that they are important to your future employers too.

UTS Graduates...



Critical Thinking

Are reflective critical thinkers who contribute to practice, policy, and research to enhance health care and health outcomes.



Leadership

Are effective, collaborative and responsive leaders.



Accountability

Are socially, culturally and ethically accountable and consider health care in a global context.



Communication

Communicate appropriately and consistently in diverse situations.



Professional Qualities

Embody the professional qualities appropriate to the scope of their role.



Indigenous Cultural Respect

Demonstrate professional cultural competency which contributes to the health and well-being of Indigenous Australians, inclusive of physical, social, emotional and spiritual wellness.

Some postgraduate health courses have tailored Graduate Attributes.



Disclaimer: Courses and electives are offered subject to numbers. The information in this brochure is provided for Australian and New Zealand Citizens and Australian Permanent Residents. If you are an international student, please consult the International Course Guide available from UTS International. Information is correct at time of printing (October 2019) and is subject to change without notice. Changes in circumstances after this date may alter the accuracy or currency of the information. UTS reserves the right to alter any matter described in this brochure without notice. Readers are responsible for verifying information that pertains to them by contacting the university.

Images: Toby Burrows, Andy Roberts, Anna Zhu, Ingram Publishing, Thinkstock, Jupiterimages, Shutterstock, Matthew Duchesne, iStock, Getty, Nicole England
22897 SEPTEMBER 2019

Custom Fit Courses

Master of Technology

GAIN MULTIDISCIPLINARY SKILLS TO INNOVATE AND LEAD

Industries and organisations are being transformed by technology. This degree will give you the multidisciplinary skills to thrive in this rapidly changing world by developing a set of capabilities, in technology and other areas, that will enable you to succeed in digitally disrupted organisations and industries.

FLEXIBLE, INDIVIDUALISED LEARNING

The Master of Technology combines practice-based subjects, called Studios, with subjects from across the university, to adapt the degree to your individual needs.

You will engage in peer and professional career coaching in the core studios to hone skills tailored to your career – problem solving, mindful collaboration, adaptive leadership, communication, research, critical thinking – equipping you with social and reflective competencies for our rapidly changing, digitally disrupted and technology enriched enterprises and communities.

THE PLACE TO BE FOR TECHNOLOGY LEADERS

As a graduate, you will become a decision maker and innovator tackling complex problems requiring a diverse skillset.

Graduate Certificate

Course code: C11301

Course duration: 0.5 years

Graduate Diploma

Course code: C06137

Course duration: 1 year

Master

Course code: C04406

Course duration: 1.5 years

For more details and admission requirements please visit:
uts.edu.au/mt

COURSE STRUCTURE

Subjects	Graduate Certificate in Technology	Graduate Diploma in Technology	Master of Technology
Core Studio Stream (each 6 credit points)			
Technology Disruptors Studio	●	●	●
Capstone Studio	N/A	N/A	●
		Complete one of the following:	Complete two of the following:
Global Technology Issues Studio	N/A	●	●
Innovation and Entrepreneurship Studio	N/A	●	●
Prototyping Design and Systems Studio	N/A	●	●
Technology and Communities-focused			
Technology/Scientific Thinking-focused choice	12 credit points	12 credit points	24 credit points
Communities of Practice-focused choice	6 credit points	24 credit points	24 credit points
Specialisations (Sub-majors)			up to two specialisations (including personally configured sub-majors) may be selected
Total Credit Points	24	48	72
Minimum course duration: Full-time years	0.5	1	1.5

Master of Professional Practice

BECOME AN AGILE LEADER WITH MULTIDISCIPLINARY SKILLS

The course aims to initiate, develop and showcase your professional skills in an individual, career-focused e-portfolio spanning the course.

Technology, Industry 4.0, climate actions, globalisation and more: we live and work in a time of unprecedented change that affects the ways we live and work. This degree will give you a multidisciplinary advantage to lead in your organisation and the wider community.

The Master of Professional Practice course structure allows for the engagement with postgraduate subjects across the spectrum of disciplines. The core studios focus on critical reflections on situating the learner in their professional and global context. The Master of Professional Practice core studios are professional practice and people oriented and afford open-ended opportunity to explore challenges.

THE PLACE TO BE FOR INNOVATIVE LEADERS

As a graduate, you will become an agile decision maker and persuasive communicator who adaptively leads people in tackling complex problems.

Graduate Certificate

Course code: C11298
Course duration: 0.5 years

Graduate Diploma

Course code: C06136
Course duration: 1 year

Master

Course code: C04404
Course duration: 1.5 years

For more details and admission requirements please visit:
uts.edu.au/mpp

COURSE STRUCTURE

Subjects	Graduate Certificate in Professional Practice	Graduate Diploma in Professional Practice	Master of Professional Practice
Core Studio Stream (each 6 credit points)			
Professional Learning Studio	●	●	●
Capstone Studio	N/A	N/A	●
		Complete one of the following:	Complete two of the following:
Global Issues Studio	N/A	●	●
Human-centred Design and Systems Studio	N/A	●	●
Innovation and Entrepreneurship Studio	N/A	●	●
Professional-focused			
Professional-focused choice	18 credit points	36 credit points	48 credit points
Specialisations (Sub-majors)			up to two specialisations (including personally configured sub-majors) may be selected
Total Credit Points	24	48	72
Minimum course duration: Full-time years	0.5	1	1.5

health.uts.edu.au/future

Connect with us

For advice or information
go to ask.uts.edu.au
or call **1300 ASK UTS**