

New Graduate Program



Sheila Collins

Clinical Support Services Manager

Chris O'Brien Lifehouse





Lifehouse in numbers

- Number of patients: around 42,000 a year, including screening and those who are not found to have cancer
- Number of beds: 125
- Number of intensive care beds: 18
- Number of theatres: 8
- Number of linear accelerators: 5
- Number of clinical trials: around 40
- Number of research projects: around 100
- Number of staff: around 600



New Graduate program

- We are offering a 2 year, 72 hr/fn contract
- Supernumerary time at commencement
- Two 6 month rotations – Medical, surgical, Day Therapy
- Perioperative stream
- 4 study days per year
- Monthly New Graduate meetings

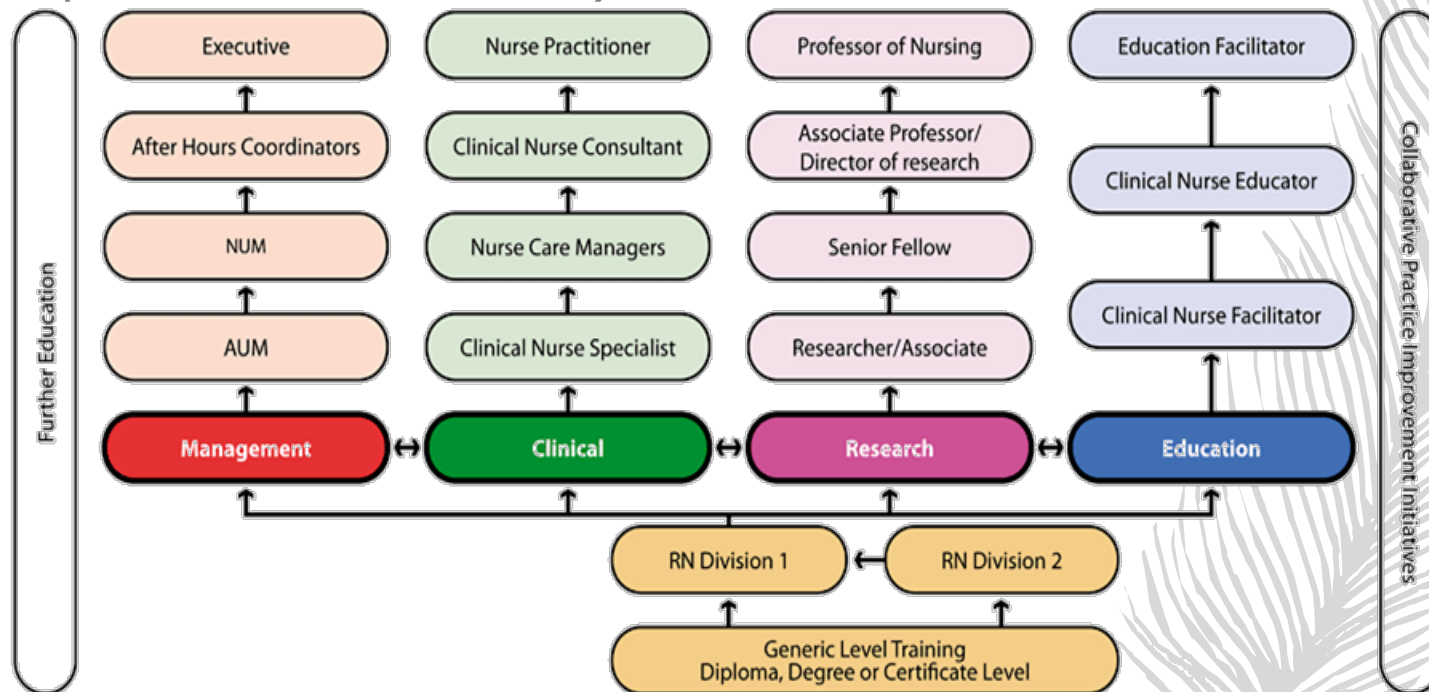


Chris O'Brien Lifehouse/ UTS Perioperative CAP.

- 'CAP' is a tertiary level 'clinical accreditation program' which is a rigorous and stimulating way to facilitate career progression through independent study, research and collaborative learning in a work setting negating the need for offsite face-to-face study.
- 'CAP' at Lifehouse will cover Scrub/Scout or Anaesthetics or Recovery or a blend of the 3.



- This is a great way to develop your professional portfolio for career development/CV, Clinical Nurse Specialist applications or potentially exploring new practice areas or levels of practice (perhaps Nurse Practitioner?)





Perioperative CAP program

Lifehouse is currently incorporating the CAP course into our New Graduate professional development pathway.

What does this mean for me?

- This means that by the time you have completed your Perioperative New Graduate placement with Chris O'Brien Lifehouse you will have completed 1 of 4 subjects required for postgraduate study at UTS.
- Normally New Graduates are excluded from participating in postgraduate studies until a minimum of 2nd year of practice.
- This means:

You can fast track your career!

UTS and the assurance of RPL

(recognized for 10 years after course completion
😊)

“I am pleased to confirm that the submission for credit recognition for the Perioperative CAP (Anaesthetics/Recovery or Circulating/Instrument) was considered and approved by the UTS Faculty of Health on 11 November 2019.

Credit recognition was granted for a period from 1 December 2019 until 30 November 2022. Students who provide evidence of satisfactorily completing the Chris O'Brien Lifehouse Perioperative CAP shall be granted credit for the subject 92869 or 96320 Specialty Clinical Practice [6 credit points] in any PG Nursing Course at UTS within the recommended UTS RPL time period. ”

Kevin Peters
Committee Officer
UTS Faculty of Health



Perioperative CAP Program



CAP ASSESSMENT SCHEDULE 2020							
		MONTHS/ week					
ASSESSMENT TASK		%	1 1-4	2 5-8	3 9-12	4 13-16	5 17-20
1	1.Portfolio Plan/learning Goals	20%	Mon week 3				
2	4x specialty competencies 2x advanced competencies with learning package		competencies to be completed by Fri week 18				
3	case study 2000 word	35%	case study to be completed by mon week 12				
4	Final Portfolio	45%	Final Portfolio due on Monday week 20				
		100%					
Assignment		Due Date					
1	portfolio plan/learning goals	Mon week 3					
2	competencies	Fri week 18					
3	case study	Mon week 12					
4	final portfolio & evidence of learning goals & reflection	Mon week 20					

- The Lifehouse CAP is set over a generous 5 month timeframe to allow for participant engagement and facilitate advanced level clinical and academic outcomes.
- A dedicated CAP coordinator is also available for course support and 1-to-1 mentorship, facilitation and assessment support.



Application process

Check the requirements on the website

<https://www.mylifehouse.org.au/about-lifehouse/careers/>

- **Applications open**

- **Monday 22nd June 2020**

- **Applications close**

- **Friday 31st July 2020**

- Please submit a cover letter and a CV
- Your cover letter should address the selection criteria as well as your reason for applying to Chris O'Brien Lifehouse for your New Graduate program.
- Please nominate two referees on your CV.

Application process



Selection Criteria –Applicants must:

- Successfully complete their study and be eligible to register with the Nurses and Midwives Board of Australia AHPRA
- Be available to undertake 24 months employment (72hrs/fn)
- Overseas students must have documented proof of English Language skills
- Have Australian citizenship or a visa which permits employment in Australia for the duration of the program. There is no sponsorship available for student visa holders
- Display effective interpersonal skills
- Demonstrate professional accountability for own actions
- Demonstrate commitment to ongoing professional development
- Send a copy of third-year clinical placement review/appraisals.

Application process



- Applications to be submitted via the Careers page on the website
- You will be contacted after the closing date to let you know whether you have been successful in securing an interview
- The Interviews will be held in September
- We will make our first round of offers late September/Early October
- We may make second round offers
- The new graduate program will commence 8th February 2021



Chris O'Brien Lifehouse

Questions?

