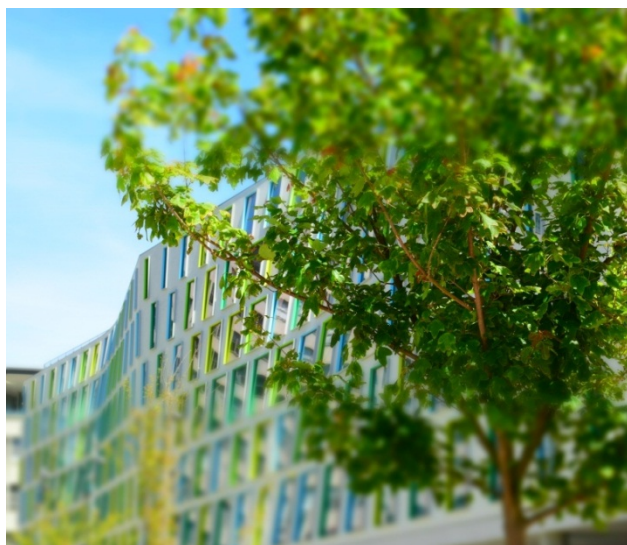


## Alumni Green

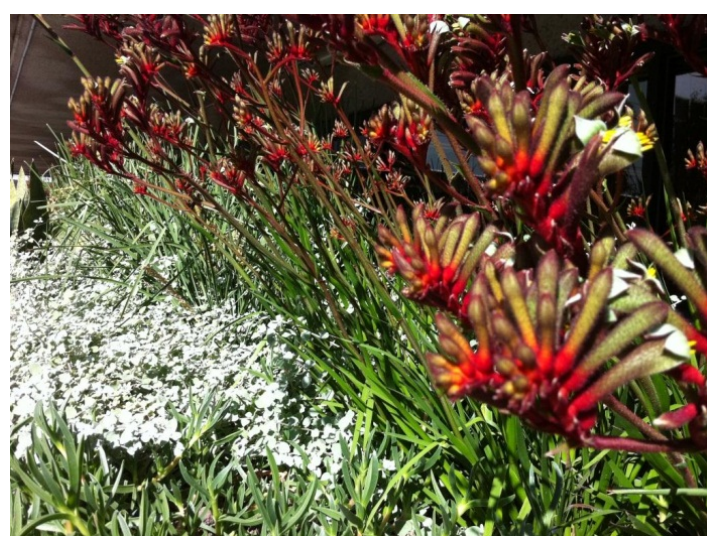
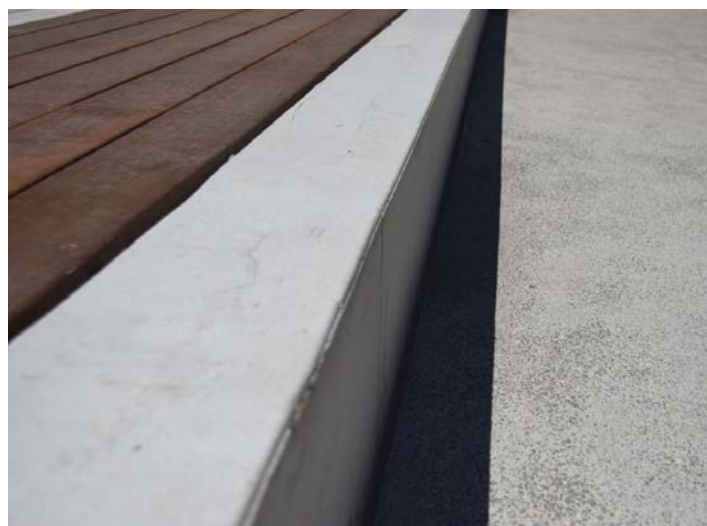
### SUSTAINABLE DESIGN FEATURES



- Alumni Green is a **green roof**, with the Ross Milbourne Sports Hall & Library Retrieval System located directly below. Benefits of green roofs include improved insulation, air quality, biodiversity, quality of stormwater run-off, & urban heat island effect mitigation.
- **Native, drought tolerant species** that require little watering are planted in the garden pods.
- **Deciduous trees** allow sunlight to fall on Alumni Green during the Winter months.
- **Efficient irrigation systems & controls** are used for plant watering, such as sprinklers & sub-surface irrigation with timers.
- **Stormwater is captured, stored, treated & re-used** for irrigating the lawn, landscaping & trees of Alumni Green. Large stormwater tanks located beneath Alumni Green enable UTS to reduce its potable water consumption, reduce stormwater runoff & pressure on local infrastructure during storm events, & future-proof the University against water restrictions during drought periods. A 60,000L tank stores stormwater run-off from Alumni Green, which is treated & then re-used to provide approx. 87% of Alumni Green's irrigation needs. A 32,000L tank provides on-site detention & is used to manage stormwater in the event of unusually heavy rain.
- **Bottle refill /bubbler stations** will be installed, reducing plastic water bottle waste.
- The lanterns above the garden pods contain **energy efficient LED lights**.
- External lighting fixtures face downward, **minimising light pollution** into the night sky.
- **Timber from certified sustainable sources**, Australian plantation spotted gum, is used for benches & decking in the garden pods.
- **Steel is sourced from local, environmentally responsible steel manufacturers**.
- **"Green concrete"**, substituting a proportion of cement with flyash (a waste product from power stations) is used.

# Sustainability

[www.sustainability.uts.edu.au](http://www.sustainability.uts.edu.au)



## PROJECT TEAM

**OWNER + PROJECT MANAGER**  
University of Technology, Sydney

**LANDSCAPE ARCHITECT**  
ASPECT Studios

**CONTRACTOR**  
Richard Crookes Construction

**LANDSCAPE SUBCONTRACTOR**  
Regal

## FAST FACTS

|                              |                                |
|------------------------------|--------------------------------|
| <b>SIZE</b>                  |                                |
| Lawn                         | 1,200m <sup>2</sup>            |
| Overall                      | 6,500m <sup>2</sup>            |
| <b>COST</b>                  |                                |
| Construction cost            | \$5.5M                         |
| <b>DATES</b>                 |                                |
| Start date                   | September 2013                 |
| Alumni Green East completion | March 2014                     |
| Alumni Green West completion | October 2014                   |
| Official opening             | 11 <sup>th</sup> December 2014 |

# Sustainability

[www.sustainability.uts.edu.au](http://www.sustainability.uts.edu.au)